

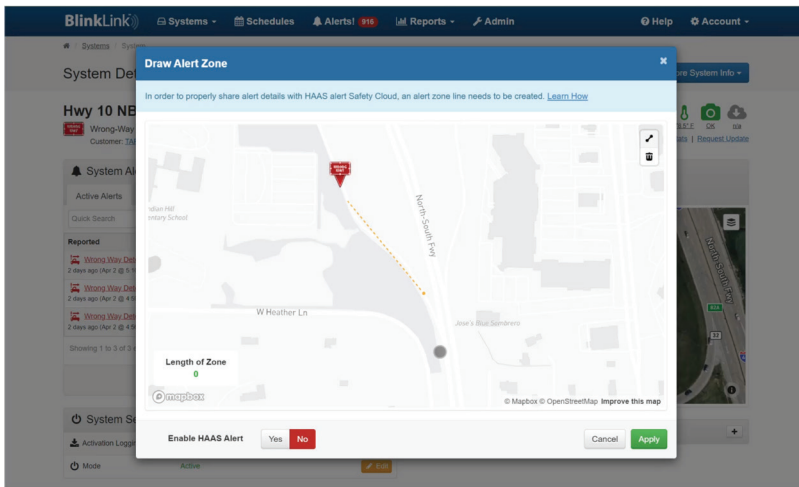
## WRONG-WAY DIGITAL ALERTS FOR RIGHT WAY DRIVERS



Integrated with TAPCO's Wrong-Way Alert System, HAAS Alert optimizes safety in the instance of a wrong-way event by delivering real-time warning to nearby right-way drivers.

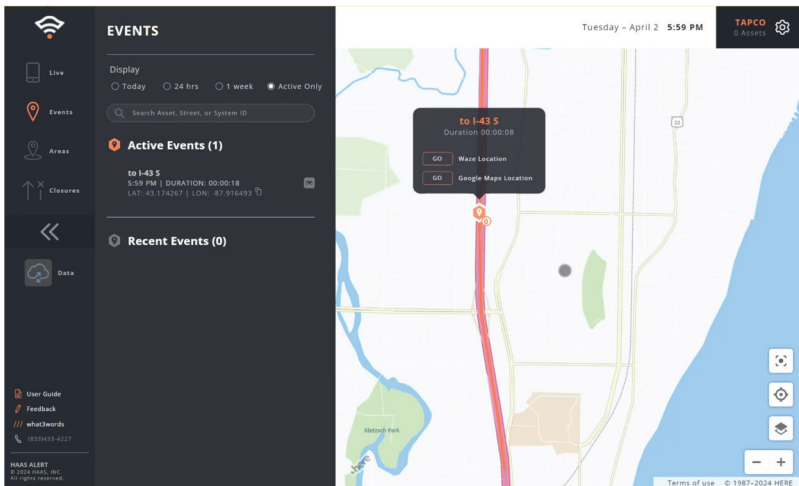
- TAPCO Wrong-Way Alert Systems connects to Safety Cloud<sup>®</sup> through TAPCO's smart city software BlinkLink<sup>®</sup>
- When a wrong-way vehicle is detected, BlinkLink<sup>®</sup> automatically sends alerts nearby drivers in the route of the wrong-way driver
- Right-way drivers receive these warning alerts through in-vehicle navigation





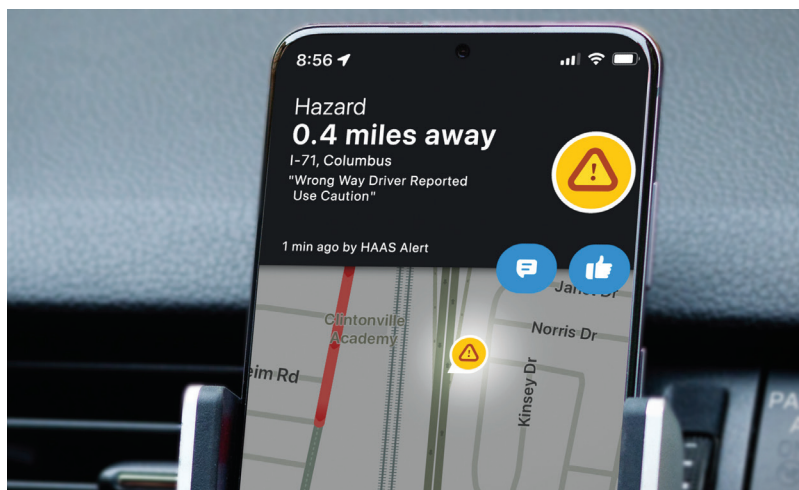
### **ALERT ZONE ESTABLISHED**

HAAS' Safety Cloud® and TAPCO's BlinkLink® are connected, where a predetermined stretch of roadway near the the wrong-way detection point is congifured by TAPCO and DOT engineers. This becomes the HAAS Alert Zone.



### **WRONG-WAY DRIVER DETECTED**

If a vehicle is detected advancing in the wrong direction through TAPCO's Wrong-Way Alert Zone, BlinkLink® relays the alert to HAAS' Safety Cloud®, which delivers advanced warning to right-way drivers.



### **HAAS SENDS ALERT TO VEHICLES/PHONES**

Right-way drivers within the Alert Zone will receive a warning message similar to "WRONG-WAY DRIVER REPORTED: USE CAUTION" via their in-vehicle navigation.

***HAAS Alert's network consists of 2M connected vehicles and tens of millions mobile navigation app users.***