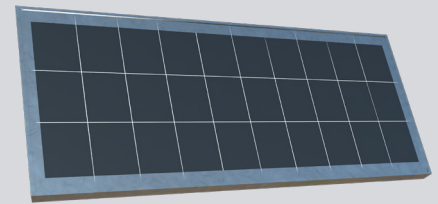


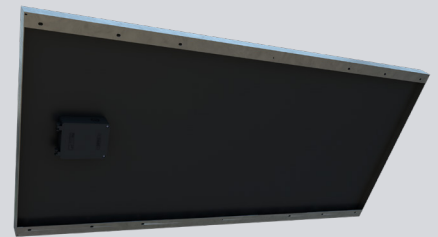
# 165W SOLAR PANEL

## SPECIFICATIONS

<b>POWER</b>	165W
<b>NOMINAL VOLTAGE</b>	12V
<b>OPEN CIRCUIT VOLTAGE</b>	20.41V
<b>SHORT CIRCUIT CURRENT</b>	9.38A
<b>MAXIMUM POWER VOLTAGE</b>	17.78V
<b>MAXIMUM POWER CURRENT</b>	9.32A
<b>GLASS</b>	Tempered
<b>FRAME</b>	Anodized aluminum
<b>CONSTRUCTION</b>	Silicon cells encapsulated in double-layer EVA with a white polymer backing
<b>WEIGHT</b>	25.4 lbs (11.5 kg)
<b>ENCLOSURE</b>	IP65 rated
<b>MOUNTING HARDWARE</b>	Various options available
<b>OPERATING TEMPERATURE RANGE</b>	-40° F to 185° F (-40° C to 85° C)
<b>DIMENSIONS</b>	25.98" W x 57.72" H x 1.97" D (660 mm W x 1466 mm H x 50 mm D)



**FRONT**



**BACK**

## SIDE-OF-POLE BRACKET

<b>MATERIAL</b>	Aluminum
<b>POLE TYPE</b>	3" or larger (4½" shown)
<b>MOUNTING HARDWARE</b>	Banding, U-bolt, or bolt
<b>BRACKET</b>	Single and Dual solar panel configurations available



**SIDE-OF-POLE SINGLE PANEL BRACKET**