



# NATIONAL GOVERNMENT AND PUBLIC WORKS TRAFFIC SAFETY



A pioneering force in the industry, TAPCO has been bringing cutting-edge traffic safety solutions to communities nationwide since 1956. We specialize in manufacturing, servicing and distributing an expansive portfolio of traffic and parking safety solutions, leading the way when it comes to expertise and innovation. Safety is at the heart of all TAPCO innovations — and our mission to save lives prospers in each of our products, from our LED-illuminated LegendViz® technology and Wrong-way Alert Systems to our groundbreaking pedestrian safety solutions.



#### Unmatched Expertise

Our team has worked alongside traffic professionals for more than 60 years, providing us with an exclusive, knowledgeable perspective on the needs of the traffic safety industry: past, present and future.



#### Innovative Technology

Traffic safety evolves — and so do we. We continue to be at the forefront of the industry by embracing cutting-edge advancements and tailoring our solutions to meet our customers' needs.



#### A Nationwide Presence

Our reach spans all 50 U.S. states — plus some regions of Canada, giving us valuable insight and an in-depth understanding of a range of community safety concerns and challenges.



#### Award-winning Culture

At TAPCO, we have cultivated a collaborative culture that fosters innovation and instills a sense of pride. Our commitment to excellence is evident in our recognition as a repeat recipient of the Top Workplaces award.



# TABLE OF CONTENTS



**TRAFFIC CONTROL** 6  
Help maintain traffic flow from interruption with systems and/or add on's.



**TRAFFIC CALMING** 12  
Maintain safe speeds, especially with high volume traffic with specific traffic calming measures.



**ALERTS** 14  
Learn how to enhance any TAPCO-manufactured system with warning alerts, designed to improve driver compliance.



**SIGNS** 16  
TAPCO's sign shop has been operating for decades and guarantees high quality and performance.



**PREVENTATIVE MAINTENANCE** 18  
Learn more on how to improve your system's lifespan.



**PROCUREMENT** 19  
Need help securing funding or not sure how to implement a solution? Talk to our experts.







## TRAFFIC CONTROL

Ensuring safety on your roadways is of the utmost importance to us, and with 60+ years of experience, we take pride in our ability to provide cutting-edge innovations for any situation.

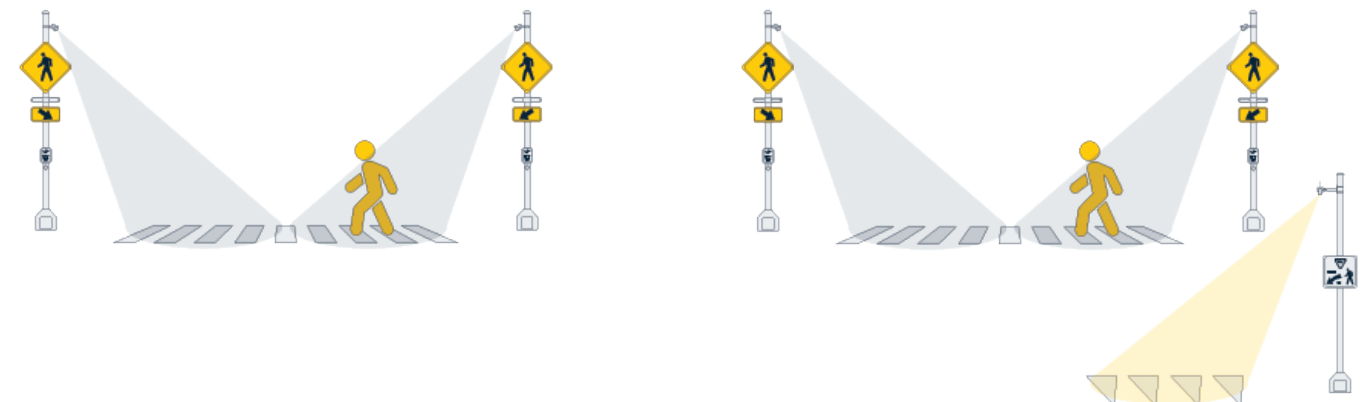
Our solutions range from roadway guidance to traffic calming — and everything in between — with LED-enhanced warning alerts available for many of our signs and systems. Whether you're looking to provide advance warning at common pedestrian crossings or encourage slower speeds, we're here to help every step of the way.

Our solutions address a variety of safety concerns, including:

- Pedestrian Crossing
- Emergency Warning
- Facility Security
- Speed Awareness
- Roadway Visibility
- Inclement Weather
- Overheight Vehicles/Equipment
- Curve Warning

## TRAFFIC CONTROL: PEDESTRIAN CROSSING

Suitable for any crossing point, TAPCO Pedestrian Crosswalk Systems offer passive activations to provide vulnerable road users with confidence to safely navigate any military base or private roadway on foot — day or night. Equip your Pedestrian Crosswalk System with activations of your choice: RRFB, BlinkerBeacon™ or BlinkerSign®. And further enhance any Pedestrian Crosswalk System with TAPCO nighttime visibility enhancements, SafeWalk® Crosswalk Illuminator and VizMark™ Pavement Marking Enhancement.



### SafeWalk® Crosswalk Illuminator

Vulnerable road users can become more visible in crosswalks with TAPCO-engineered lighting, made especially for nighttime and low-light conditions.

### VizMark™ Pavement Marking Enhancement

By illuminating crosswalks or advanced stop and/or yield lines when pedestrians are detected, VizMark™ helps motorists identify important pavement markings.



# TRAFFIC CONTROL: SYSTEMS



## Speed Awareness

Designed to promote roadway compliance, speed awareness solutions add an extra layer of safety to any desired location, such as speed transitions and school zones, creating a safer environment for all road users.



Brochure



## Reverse Entry Alert Detection System (READS)

Ideal for Access Control Points (ACP), READS prevents unauthorized entry into controlled areas by encouraging self-correction and deploying final denial barriers if the driver fails to self-correct. Further enhance nighttime visibility on any READS by opting for a LegendViz® Wrong-Way sign.



Brochure



## Dynamic Curve Warning System

The BlinkerChevron™ Dynamic Curve Warning System is engineered to maximize safety on horizontal curve segments by guiding motorists through curves and mitigating roadway departures.



Brochure



## High Water Warning System

Equipped with hand-picked sensor technology, the High Water Warning System detects when water rises to dangerous levels to provide advance warning to drivers, mitigating the need to deploy resources.



Video



## Overheight Warning System

By utilizing sensor technology, the Overheight Warning System detects vehicles that exceed height restrictions and are in danger of low-structure collision to then activate warning alerts to provide drivers with the opportunity to safely exit and reroute.



Brochure



## Emergency Vehicle Warning System

The Emergency Vehicle Warning System alerts roadway users of an ongoing emergency drill or real-time response to encourage drivers to exercise caution at entry and exit points. Available with LED warning alerts and optional custom signage, the system heightens driver awareness to facilitate an uninterrupted response.



Video





# TRAFFIC CONTROL: ADD ON'S



## In-Street Crosswalk Signs

Designed to alert motorists of an upcoming crosswalk, the signs promote increased roadway compliance, especially near a mid-block crosswalk or other heavily trafficked areas.

## Water-Filled Barriers

Water-filled traffic barriers are ideal for creating safe pathways and controlling vehicle access. The lightweight barriers are designed with portability in mind, offering ease of transportation for temporary usage.

## Traffic Cones

Guide traffic and define safety zones with highly visible traffic cones. Size ranges from 18" to 36" with various color options, including the standard orange.

## Stacker Cones

Stacker cones offer unmatched flexibility for many traffic control needs — from temporary road closures to construction projects.

## Barricades (Type II/III)

Provide clear guidance of traffic pattern changes with Type II and Type III barricades. Designed for ease of transportation, the barricades enhance roadway awareness and driver safety.

## Delineators

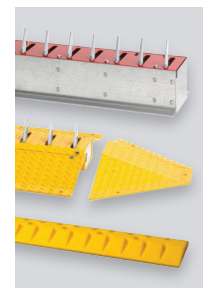
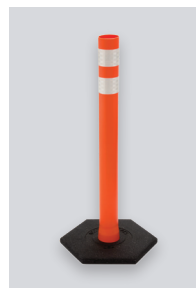
Available in a variety of sizes, delineators provide increased visibility of directional guidance on any military base or private roadway.

## In-Ground Spikes

By strategically placing spikes at key access locations, effectively control vehicle movement and guarantee enhanced safety.

## A-Frame Boards

Provide temporary directional guidance with a-frame boards (wide or narrow) that can be enhanced with any sheeting and/or sign legend to effectively communicate your desired messaging.



## Composite Markers

Clearly convey roadway information, such as lane divisions and construction zones with composite markers. The fiberglass posts offer exceptional durability, withstanding extreme temperatures and vehicle impact.

## Arrow Boards

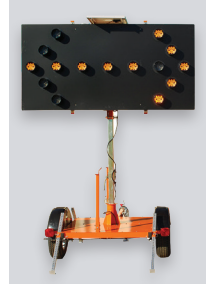
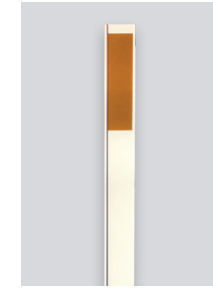
By providing clear guidance to drivers, arrow boards maximize roadway awareness and help direct traffic through roadway changes.

## Message Boards

Display any message with full-matrix mini message centers. Equipped with ultra-bright LEDs, the sign trailers are easily visible to passing drivers.

## Traffic Counter

Gather essential traffic data to make informed decisions with radar-equipped traffic counters. Accurately identify speed, direction, vehicle count and more on any private roadway.



# TRAFFIC CONTROL: OTHER SYSTEMS



## BlinkerStop®

Elevate driver awareness at any intersection or stop location with a BlinkerStop® stop sign. Designed to enhance roadway visibility, the signs are equipped with flashing perimeter LEDs and can be seen more than a mile away. The signs are programmed to flash 24/7, ensuring heightened visibility at all times, regardless of fog, rain or snow.





# TRAFFIC CALMING: ADD ON'S



Each roadway is built differently — and communities sometimes require additional measures to complement their traffic safety strategy. Take your traffic calming measures to the next level with offerings for any occasion.



### School Zone

Ensure the safety of students with a school zone crosswalk system. The systems provides drivers with real-time warning, encouraging them to slow down when students are present. And the systems are available with various activation options, depending on the unique needs of each school zone.



### Speed Bumps/Humps

Further elevate your traffic calming strategy by implementing speed bumps on your community's roads. The speed bumps are designed with rubber to conform to any roadway, as well as embedded with reflectors to heighten driver visibility.



### Portable Speed Bump

Calm traffic at your leisure with portable speed bumps. Ideal for events, construction projects and more, portable speed bumps provide short-term traffic calming when permanent measures are not desired.



### Portable Message Boards

Use portable message boards when situational messages are needed. These message boards are MUTCD-compliant and can display multiple screens of text with the option to remotely change messaging.

# TRAFFIC CALMING



When there are high volumes of traffic, ensuring compliance to the posted speed limit is paramount. Traffic calming measures, such as radar feedback signs and trailers, are proven to increase roadway compliance by showing drivers their speeds and encouraging them to slow down. By elevating driver awareness beyond the standard speed limit signs, traffic calming measures can create a safe environment for all roadway users.



### Radar Feedback Signs

Radar feedback signs offer a simple yet effective approach when it comes to promoting safer speeds. Designed with versatility in mind, these signs can be paired with a posted speed limit sign or as a standalone measure to provide permanent traffic calming benefits in any desired location.



### FAST

Radar speed trailers complement a variety of uses from short-term traffic calming to prioritizing pedestrian safety. Radar speed trailers have been proven to decrease speeds and elevate roadway safety, especially with escalating violator alerts that capture the attention of speeding drivers.

## DID YOU KNOW?

Any school zone system can be combined with a radar feedback sign to maximize school zone safety.





## ALERTS

Traffic sign visibility can be easily compromised — from communities with limited visibility to roadways commonly traveled at night. TAPCO's LED-enhanced warning alerts are designed to increase roadway compliance and awareness by commanding driver attention. Our wide selection of alerts can be added to any sign or system and offer a variety of activation options, including 24/7, dusk-to-dawn and vehicle activation.



### BlinkerSign®

Designed to command motorists' attention and increase roadway compliance, each BlinkerSign® is edge-lit with flashing LED warning lights. The perimeter lights are visible more than a mile away, making the sign's enhanced visibility ideal for evening hours and problematic locations.



### Ruggedized BlinkerSign®

Reinforced with two additional layers of material, TAPCO's ruggedized signs offer exceptional durability and reduce the likelihood of being damaged, especially due to inclement weather. Any LED-enhanced TAPCO sign can be ruggedized to provide enhanced protection and longevity.



### Indoor BlinkerSign®

An indoor BlinkerSign® facilitates situational awareness in indoor settings. The signs are equipped with highly visible, flashing LEDs to increase compliance and are ideal for environments that regularly experience heavy equipment, vehicle and/or pedestrian traffic.



### Custom BlinkerSign®

Convey any message to passing motorists with a custom BlinkerSign®, such as "BE PREPARED TO STOP" or "INTERSECTION AHEAD". Each sign is enhanced with flashing perimeter LED warning alerts to command the attention of roadway users, ensuring any message stands out.



### LegendViz®

Add next-level visibility to any system featuring a stop, wrong-way or do not enter sign with LegendViz® technology. The LED-illuminated legends brighten according to ambient light levels, enhancing sign legibility distance and heightening situational awareness — all without the need for retroreflectivity or headlights.



### LegendViz® BlinkerSign®

Visible more than one mile away, the LegendViz® BlinkerSign® brings an extra layer of visibility to any stop, wrong-way or do not enter sign. By incorporating LED-illuminated legends with flashing perimeter LED warning lights, the alert combination offers consistent nighttime visibility.



### RRFB-XL2™

A step above industry standard, TAPCO's rectangular rapid flashing beacon (RRFB-XL2™) elevates safety in any system. The extra-large rectangular rapid flashing beacons are highly visible to approaching drivers and utilize the FHWA-approved wig-wag plus simultaneous (WW+S) flash pattern.



### BlinkerBeacon™

The BlinkerBeacon™ flashing LED beacons are designed to provide real-time warning to drivers in a variety of settings. With an array of arrangement options available, beacon alerts can be added based on each system's and/or environment's activation needs.





## SIGNS: TAPCO'S CUSTOM SIGN SHOP

Backed by decades of experience, TAPCO's Sign Shop has been making quality signs for years. Our team takes immense pride in TAPCO's reputation as a trusted and reliable source for signage — and it shows in the products we deliver. We understand the importance of dependable signage, which is why our team is deeply committed to producing signs that enhance safety and efficiency on your roads.

Our Sign Shop is driven by one common goal: making our roadways a safer place. The signs we offer range from standard traffic messaging to unique custom messaging, ensuring next-level safety on any roadway. Whether providing clear communication on defense access roads or guiding motorists through your military base, TAPCO's signs are expertly designed to provide peace of mind on your roads for years to come.

TAPCO's Sign Shop offerings even include U.S. Fish & Wildlife Service signage. Our sign experts work directly with each refuge to understand their needs and create custom signs that ensure each message stands out. Available signage includes entrance, area management and parking signs — all of which are compliant with USFWS standards.

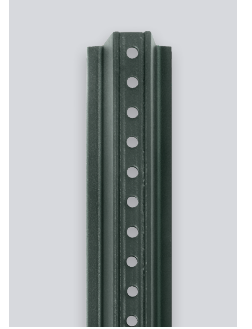


**Draw attention to any sign with VizMark™. By illuminating advance stop and yield lines, the pavement marking enhancement immediately elevates nighttime visibility and overall safety.**

## SIGNS: SUPPLIES FOR SIGNS

### Reflective 3M Sheeting Rolls

Enhance visibility of traffic signs and temporary road markings with 3M's reflective sheeting. From temporary guidance to heightened nighttime safety, reflective sheeting offers a variety of uses for any traffic safety needs.



### U-Channels

Pair any traffic sign with u-channel sign posts, ideal for applications where double-sided mounting is desired. The sign posts are made with high-quality new billet steel to offer unmatched durability.

### Square Posts

Crafted with galvanized steel, square posts offer unparalleled versatility and stability for any traffic sign application. The four sides allow for multi-directional application, ensuring all messages stand out to motorists.

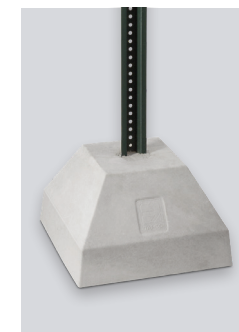


### Round Poles

Ideal for single sign applications, round poles ensure any directional guidance stands out. Available in galvanized steel and aluminum, the poles provide ease of installation and exceptional wind resistance — and are even compatible with breakaway systems.

### Concrete Sign Bases

Place a traffic sign anywhere on your base with concrete sign bases. Built to provide exceptional stability, the bases can support any sign up to 30"x30" and can be utilized in a variety of applications — such as parking lots and regulatory messaging.



### Portable Sign Bases

Portable sign bases simplify roadway guidance when it comes to short-term needs. Portable sign bases are lightweight and can be easily deployed, making them ideal for construction projects and seasonal applications.





## PREVENTATIVE MAINTENANCE



### **Caring for an Intelligent Transportation System extends beyond procurement and installation.**

Servicing a system can optimize performance and extend lifespan, making it a vital step in maintaining any community's systems. TAPCO offers service agreements to accompany any Intelligent Warning System installation or supplement existing Intelligent Transportation System deployments.

TAPCO's preventative maintenance plans provide continued care of any traffic system, including scheduled visits and warranty extensions. Once a system is installed, TAPCO customers can "set it and forget it", with experienced service technicians available to provide next-level service for years to come.

Additionally, TAPCO offers customized packages to supplement resources for non-TAPCO traffic systems and equipment, ensuring peace of mind for any deployed system. Standard services include scheduled visits to perform inspections and/or testing, plus complete system updates, with comprehensive documentation provided after each visit.



Video

## PROCUREMENT/CONSULTATIVE HELP



### **By offering purchase agreements, TAPCO ensures that communities nationwide can access high-quality traffic safety solutions at an affordable price.**

Purchase agreements and contracts offered by TAPCO include national cooperative contracts through Omnia Partners and federal contracts through GSA. These partnerships are designed to streamline the purchasing process, allowing transportation officials to obtain the desired solutions. Not only do purchase agreements save time and money, but they also provide transparency and peace of mind throughout the buying process.

Additionally, TAPCO has partnered with select programs to provide contracts on a state level. By offering solutions that adhere to regional standards, these programs simplify the procurement process for state agencies.

### **Consultative Help**

Each community's roadway network is set up differently — and it can sometimes be difficult to identify the most suitable fit. TAPCO offers consultative help to communities seeking the best solution for the problem facing their roadways. During the consultation process, TAPCO's experts gather information to assess the situation and recommend a right-fit solution.

The one-size-fits-all approach isn't always suitable, which is why TAPCO offers engineered-to-order options to address specific roadway safety needs. TAPCO's deep understanding of the industry paired with 60+ years of experience ensures our experts are equipped with the knowledge to select the optimal solution, carefully considering factors such as accuracy, reliability and compatibility for the best possible fit.





 (800) 236-0112  TAPCO.net.com

