

WOLF PAC



SOURCING MADE SIMPLE



**TOTAL SAVINGS
& CONVENIENCE**



Sourcing Made Simple

Multilink's Wolf PAC is a collection of our top power products available in one bundle. The Wolf PAC offers a single-sourced, complete battery backup system that improves **simplicity, durability and reliability**. Guaranteed to **increase the operational efficiency** of your traffic system and **keep your community safe** from outage-related incidents.

All products are designed, engineered, manufactured and shipped from one location. Simply select your needed power products and voilà – **Project complete in one purchase!**

1| Smart Tracker 4
018-041-11

2| Transfer Switch Options 5

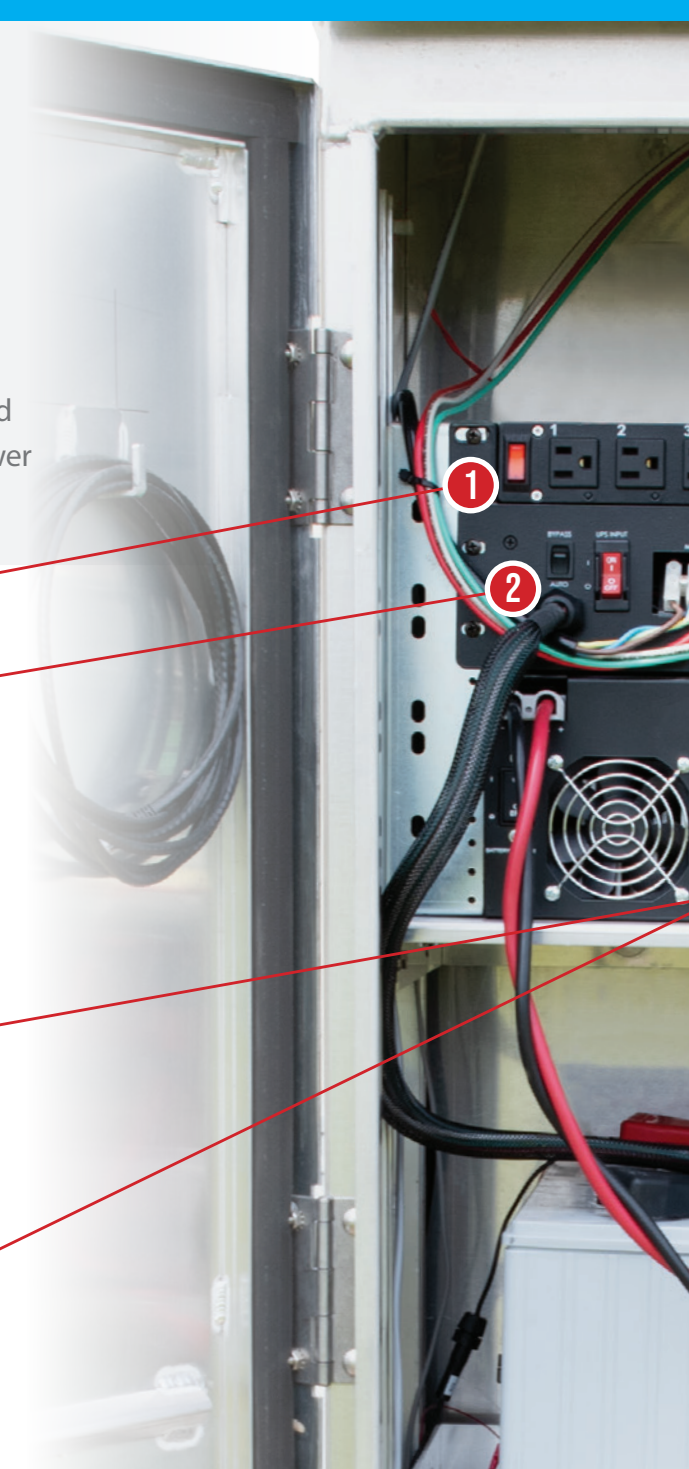
- a. **Safety Automatic Transfer Switches**
 - i. Universal/ Line-Interactive: 010-505-20
 - ii. EDP Series: 010-505-10
- b. **Standard Transfer Switches**
 - i. Rack Mountable
 - 1. Line-Interactive: 010-506-20
 - 2. EDP Series: 010-506-10
 - ii. Wall Mountable
 - 1. Line-Interactive: 010-507-20
 - 2. EDP Series: 010-507-10

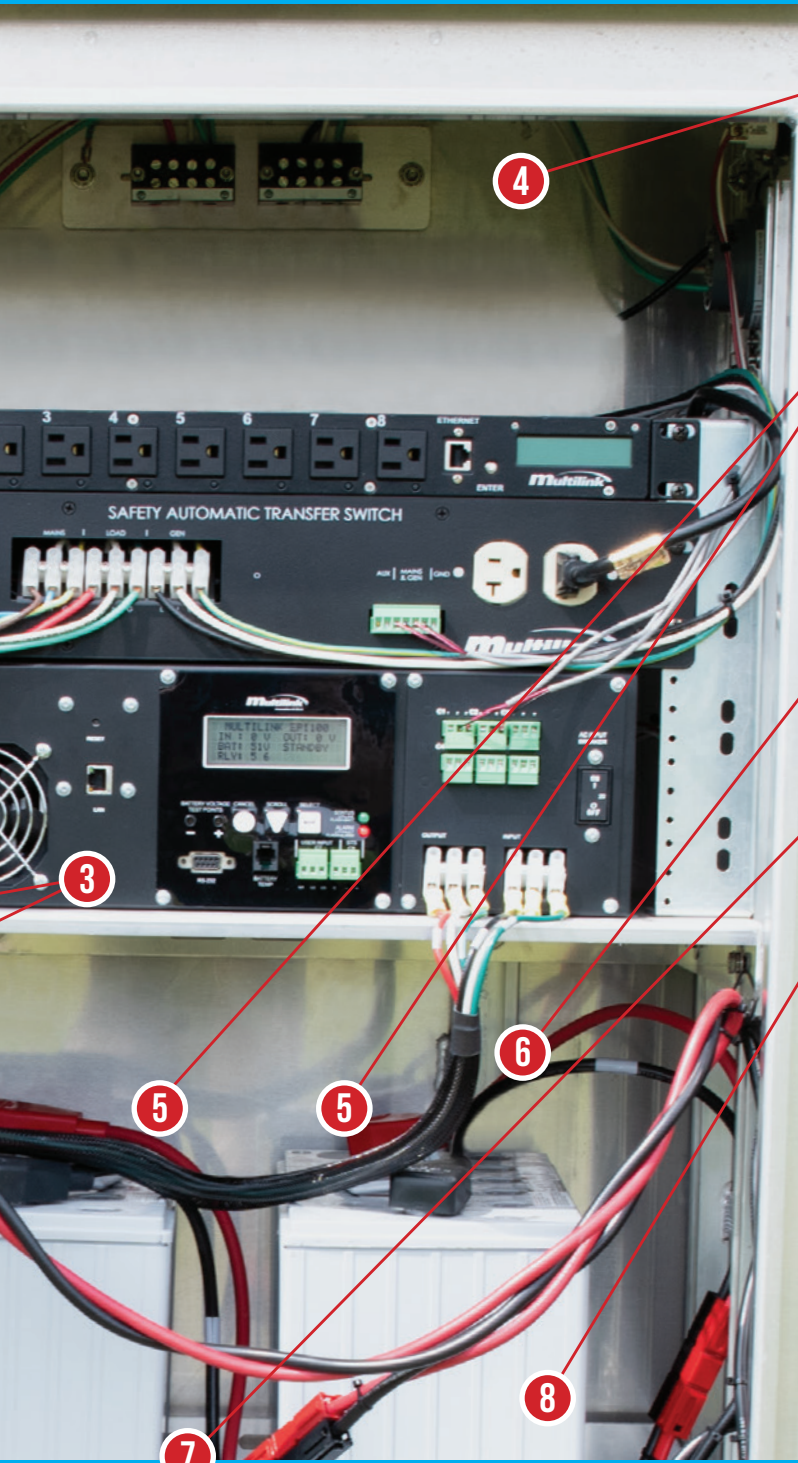
3| Line-Interactive Power Supply Options ... 6

- a. **EP 350:** 010-038-10
- b. **EP 650:** 010-034-10
- c. **EP 1100:** 010-037-10
- d. **EP 2200-T:** (w/o Embedded Communications Card): 010-022-10
 - ii. Embedded Ethernet Communications Card for EP 2200-T: 019-020-10

Double-Conversion Power Supply Options .. 7

- a. **EDP 1000:** 010-028-20
- b. **EDP 1500:** 010-029-20
- c. **EDP 2000:** 010-030-20





4| BBS Cabinet Options 9

- a. Compact BBS w/o Generator Hook-Up: 030-529-10
- b. w/ Generator Hook-Up: 030-341-10
- c. w/ Fixed Shelves & w/o Generator Hook-Up: 030-343-10

5| Accessories 8

- a. Battery Terminal Covers (pair): 538-531-10
- b. Battery Cables Kits
 - i. 48VDC for the EP 2200/EDP 2000: 870-230-10
 - ii. 36VDC for the EDP 1500: 870-230-30
 - iii. 48VDC for the EP 650/EP 350: 870-230-40
 - iv. 48VDC for the EP 1100: 870-230-50
 - v. 24VDC for the EDP 1000: 870-230-20

6| Battery Balancer Kits 8

- a. 2 Battery, 24V: 018-020-20
- b. 3 Battery, 36V: 018-008-20
- c. 4 Battery, 48V: 018-009-20

7| Battery Heater Mat 8

- a. 3 Battery String: 035-079-10

8| Batteries 13

- a. 12V 91 AH AGM Battery: 032-042-10
- b. 12V 110AH AGM Battery: 032-043-10
- c. 12V 110AH AGM Battery: 032-045-10

9| Traffic Cabinets 9

10| Warranty Options

a. All products in bundle come with a **Standard 3-Year Warranty** except the Transfer Switch which has a **Standard 5-Year Warranty**

b. **Pro Warranty Extension**
Extends standard warranties of bundle to 4 years total

c. **Premium Warranty Extension**
Extends standard warranties of bundle to 5 years total





Sourcing Made Simple

The Wolf PAC pulls all the best products together in one bundle. Each product is designed to maximize your network's reliability. To specify your individually designed Wolf PAC, review the following pages to find the right fit for your needs. Whether it is power monitoring, backup systems, batteries or the addition of fiber to your network, we will help you make the right choice. Each product listed includes specifications as well as the stock ID for easy ordering. Simply select your set of products and we will do the rest. **One Vendor, One Shipment, One Invoice!**



Smart Tracker

STOCK ID	DESCRIPTION	DIMENSIONS	DIGITAL INPUT	OUTPUT RELAY	AC INPUT	ENVIRONMENTAL SPECIFICATIONS	MOUNTING
Smart Tracker							
018-041-11	Smart Tracker Remote Power Manager with 8 individually controlled outlets. Outlet Type: NEMA 5-15R, 15A/125 VAC, 60Hz. Utilizes LED indicators for active outlets, relays and digital inputs. Logs viewable through password protected user interface that stores thousands of events. Test to NEMA TS2-2016 v03.07 Standards.	1.7"H x 7.0"D x 19"W	Digital Inputs: 8 Individual Inputs <i>(2 Contacts per Input)</i> Digital Input Voltage: 5VDC, 10mA Max., Opto-isolated Inputs Analog Voltage (DC) Input: 2 Independent DC Measurement Inputs Analog Input Voltage (DC): 0-60VDC Temperature & Humidity Sensors: Embedded	Output Relays: 8 Individual Output Relays Relay Switching Voltage: 250VAC, 125VDC MAX Relay Current Capacity: 10 Amps, Each	Voltage Range: 85-154VAC; 120VAC Nominal Frequency: 60Hz ±3Hz Circuit Breaker Rating: 15A Current Capacity: 15A Power Cord: Pluggable 5-15P, C13 15A/125VAC	Operating Temperature: -37°C to +74°C (-34°F to 165°F) Operating Humidity: 5-95% Non-condensing Storage Temperature: -45°C to 85°C (-49°F to 185°F)	1RU Rack Mounting w/ Adjustable Rack Mount Brackets or Shelf Mount



Transfer Switches

STOCK ID	DESCRIPTION	DIMENSIONS	AC OUTPUT	AC INPUT	MOUNTING
Safety Automatic Transfer Switch: The Safety Automatic Transfer Switch has an operating temperature of -37°C to +74°C and provides automatic power source selection, generator capabilities and alarm reporting via dry contact relays. It includes a maintenance bypass switch.					
010-505-10	Safety Automatic Transfer Switch, EDP Series – This Safety Automatic Transfer Switch pairs with the EDP double conversion series of UPS systems.		AC Outlet Capacity: 6A MAX Voltage Waveform: Sine Wave Output Power Connection: Hard-Wired to Terminal Blocks Phases: Single Phase 3-Wire Load Power Factor: 0.7 - 1.0 Voltage: 120V Nominal	Connections: Hard-wired to Terminal Block Voltage: 120V Nominal Frequency: 60Hz	
010-505-20	Safety Automatic Transfer Switch, Universal/Line Interactive – The Safety Automatic Transfer Switch pairs with a universal transfer switch and pairs with the EP line interactive series of UPS systems.	3.5"H x 19"W x 10"D	Over Current Protection: Internal Fuses Voltage Regulation: Rated Voltage ±5% Overload Capability: 150% Current Capacity: 16.67A @ 120V Transfer Time: 4 Cycles or Less Rated Frequency: 60Hz	Input Power Factor: 0.98 - 1.0 Power Consumption: 3W Phase: Single Phase 3-Wire	Rack



010-507-10



010-506-10



Standard Transfer Switch: The Standard Transfer Switch includes maintenance bypass switch with an operating temperature of -37°C to +74°C.

010-507-10 (double conversion)	The Standard Transfer Switch pairs with the EDP series and line-interactive or double conversion UPS models. It provides power source selection, generator capabilities and alarm reporting via dry contact relays.	8.5"H x 7"W x 3.5"D	Overload Capability: 150% Rated Frequency: 60Hz Phase: Single Phase 2-wire Over Current Protection: Upstream Circuit Breaker/Internal Fuses Voltage Waveform: Sine Wave Output Power Connection: Hard-Wired to Terminal Blocks Transient Voltage Variation: Rated Voltage ±5% Voltage: 120V Nominal Transfer Time: 5 Cycles or less Voltage Regulation: Rated Voltage ±5% Load Power Factor: 0.7 - 1.0 Current Capacity: 16.67A @ 120V	Power Consumption: 3W Connections: Hard-wired to Terminal Block Phase: Single Phase 2-wire Voltage: 120V Nominal Frequency: 60Hz Input Power Factor: 0.98 - 1.0	Wall
010-507-20 (line-interactive)					
010-506-10 (double conversion)	The Standard Transfer Switch pairs with the EDP series of double-conversion and EP series of line-interactive UPS models. It provides power source selection and alarm reporting via dry contact relays.	3.5"H x 19"W x 5.5"D			
010-506-20 (line-interactive)	Includes maintenance bypass switch.				Rack



Sourcing Made Simple

Line-Interactive Power Supply

The EP Line-Interactive uninterruptible power supply (UPS) provides a steady, regulated AC output power to operate traffic signals, camera equipment and additional applications used in Departments of Transportation and Intelligent Traffic Systems (DOT/ITS). Built-in intelligence provides continuous operation during brownout and voltage spikes with Automatic Voltage Regulation. A heavy duty battery charger and robust inverter provide backup power and recharging when line voltage is present. Status monitoring capabilities are provided through the LCD display, serial interface and optional Ethernet network card for remote monitoring.



STOCK ID	DESCRIPTION	DIMENSIONS	OUTPUT CAPACITY	BATTERY VOLTAGE
EP 350				
010-038-10	The EP 350 is a Line-Interactive Uninterruptible Power Supply (UPS) with an output capacity of 350W.	3.5"H x 17"W x 9.0"D	350W	24VDC Battery System (2, 12V Batteries)



EP 650				
010-034-11	The EP 650 is a Line-Interactive Uninterruptible Power Supply (UPS) with an output capacity of 650W.	3.5"H x 17"W x 9.0"D	650W	24VDC Battery System (2, 12V Batteries)



EP 1100				
010-037-10	The EP 1100 is a Line-Interactive Uninterruptible Power Supply (UPS) with a medium output capacity of 1100W.	5.25"H x 17.0"W x 10.25"D	1,100W	48VDC Battery System (4, 12V Batteries)



EP 2200-T				
010-022-10	The EP 2200-T is a Line-Interactive Uninterruptible Power Supply (UPS) with an output capacity of 1500W.	5.25"H x 17.0"W x 10.0"D	1,500W	48VDC Battery System (4, 12V Batteries)
019-020-10	Embedded Ethernet Communications Card for EP2200-T. Web page interface to allow monitoring and configuration of UPS remotely. SNMP and email notifications are available. NTCIP compliant.			

Double-Conversion Power Supply

Multilink's EDP Double-Conversion is an uninterruptible power supply designed to provide high quality, stable AC power to critical equipment that requires continuous, regulated power. With a pure sine wave output, the EDP provides power to sensitive loads with zero loss in output power. With 4 LEDs and a 4 line LCD display, UPS operating statistics scroll across the screen to provide at-a-glance monitoring. Ethernet connectivity is standard and includes an on-board web page for status monitoring and configuration. Compatibility with generators using the Multilink's Safety Automatic Transfer Switch (SATS) provides lasting back-up power during long utility outages and low battery shutdown. With 3 models to choose from, the Multilink Double-Conversion UPS is scalable to provide high efficiency with superior confidence in any environment.



STOCK ID	DESCRIPTION	DIMENSIONS	OUTPUT CAPACITY	BATTERY VOLTAGE
EDP 1000				
010-028-20	The Multilink EDP 1000 Double-Conversion UPS is an Uninterruptible Power Supply with an output capacity of 700W.	3.5"H x 17.0"W x 13.625"D	1,000VA	24VDC Battery System (2, 12V Batteries)



EDP 1500				
010-029-20	The Multilink EDP 1500 Double-Conversion UPS is an Uninterruptible Power Supply with an output capacity of 1100W.	5.25"H x 17.0"W x 13.875"D	1,500VA	36VDC Battery System (3, 12V Batteries)



EP 2000				
010-030-20	The Multilink EDP 2000 Double-Conversion UPS is an Uninterruptible Power Supply with an output capacity of 1400W.	5.25"H x 17.0"W x 13.875"D	2,000VA	48VDC Battery System (4, 12V Batteries)



Sourcing Made Simple



Battery Terminal Covers

STOCK ID - 538-531-20

Universal Battery Terminal Cover



Battery Cable Kits

- 870-230-10** 48VDC for the EP2200
- 870-230-20** 24VDC for the EPD1000
- 870-230-30** 36VDC for the EDP1500
- 870-230-40** 48VDC for the EP650
- 870-230-50** 48VDC for the EP 1100

Other Battery Harness are available on our website.



Battery Balancer Kits

- 018-020-20** 2 Battery, 24V External Battery Balance Manager
- 018-008-20** 3 Battery, 36V External Battery Balance Manager (BBM Plus)
- 018-009-20** 4 Battery, 48V External Battery Balance Manager (BBM Plus)



Battery Heater Mat

STOCK ID 176-001-10

Used to keep 3 battery string warm during cold temperatures. Includes 6ft AC power cord.



The Compact BBS Cabinet



Traffic Cabinets

To reliably store Department of Transportation equipment, Multilink's Wolf PAC offers a variety of aluminum and stainless steel traffic control cabinets. These sturdy cabinets offer protection from severe weather conditions and keep internal systems cool enough to function on hot days with HVAC equipment. We offer our DOT cabinets in multiple sizes and styles so that our customers can find versions that meet their unique needs. To ensure our cabinets and enclosures perform to your expectations, we test all our products in a laboratory to meet or exceed NEMA 3R specifications and general DOT cabinet standards before placing them on the market.



Sourcing Made Simple



Compact BBS Cabinet



BBS Cabinet with Generator



BBS Cabinet with Fixed Shelves

Traffic Control Cabinets

STOCK ID	DESCRIPTION	DIMENSIONS	MATERIAL	POWER HEATING/COOLING	CABLE ENTRY	MOUNTING
BBS Cabinet						
030-529-10	Compact BBS Cabinet	48"H x 16.5"W x 17.31"D	Main Body: 1/8" Aluminum w/ Synthetic Rubber Seal Hardware: Stainless Steel	Power: N/A Heating/Cooling: (1) 100CFM fan	Bottom	Ground
030-341-10	BBS Cabinet with generator hookup	48"H x 16.5"W x 17.31"D	Main Body: 1/8" Aluminum w/ Synthetic Rubber Seal Hardware: Stainless Steel	Power: Options Available Heating/Cooling: 100 CFM 48 VDC Fan	Bottom	Ground
030-343-10	BBS Cabinet with fixed shelves	51"H x 24"W x 16"D	Main Body: 1/8" Aluminum w/ Synthetic Rubber Seal Hardware: Stainless Steel	Power: Options Available Heating/Cooling: 100 CFM 48 VDC Fan	Bottom	Ground



336 Stretch Traffic Control Cabinet



336 Traffic Control Cabinet

Traffic Control Cabinets

STOCK ID	DESCRIPTION	DIMENSIONS	MATERIAL	POWER HEATING/COOLING	CABLE ENTRY	MOUNTING
336 Stretch Traffic Control Cabinet						
030-326-10	19" rack width, 21RU free space (23RU total capacity) and 10-32 treads EIA/TIA spacing. Includes Dual Door, 3 Point Latch, Corbin #2 Lock, Piano Hinge, Wind Stop, Vent Pocket, and Document Holder. Special Features: CCTV Panel, 1RU Sliding Drawer Shelf, Power Strip, 2 Light Fixtures and Life Saver™ Roof	47.6"H x 24.4"W x 20.6"D	Main Body: 1/8" Aluminum w/ Synthetic Rubber Seal Hardware: Stainless Steel	Optional Power: 120V AC, 60Hz 1-PHASE Optional Heating/ Cooling: Forced convection w/ cooling fans	Cable entry locations in bottom of enclosure	Pole or Ground
030-329-10	336 Stretch Traffic Cabinet with GTS			Power: 120V AC, 60Hz 1-PHASE Heating/Cooling: Forced convection w/ cooling fans		
030-238-50	336 Stretch Traffic Cabinet FDOT Approved					
336 Traffic Control Cabinet						
030-342-10	19" rack width, 21RU total capacity and 10-32 treads EIA/TIA spacing. Includes Dual Door, 3 Point Latch, Corbin #2 Lock, Piano Hinge, Wind Stop, Vent Pocket, and Document Holder. Special Features: 1RU Sliding Drawer Shelf, 2 (16w) Light Fixtures Each Side, Independent Transfer Switch Enclosure Welded on Side w/ Corbin Lock, Gasketing, and Green LED Indicator Light and Life Saver™ Roof	39"H x 24.25"W x 20.25"D	Main Body: 1/8" Aluminum w/ Synthetic Rubber Seal Hardware: Stainless Steel	Optional: 120V AC, 60Hz 1-PHASE (All components are grounded to the main ground bar) Optional Heating/Cooling: Forced convection w/ cooling fans and heat shields	Cable entry locations in bottom of enclosure	Pole or Ground
030-272-10	336 Mini GDOT Approved with Stove Top	32"H x 26"W x 24"D		Power: 120V AC, 60Hz 1-PHASE (All components are grounded to the main ground bar) Heating/Cooling: Forced convection w/ cooling fans and heat shields		



Sourcing Made Simple



334 Traffic Control Cabinet



332L Traffic Control Cabinet



30IV Traffic Cabinet

Traffic Control Cabinets

STOCK ID	DESCRIPTION	DIMENSIONS	MATERIAL	POWER & HEATING/COOLING	CABLE ENTRY	MOUNTING
334 Traffic Control Cabinet						
030-333-15	334 Cabinet with Traditional Stove Top Roof	66.75"H x 24.25"W x 30.25"D	Main Body: 1/8" Aluminum w/ Synthetic Rubber Seal Hardware: Stainless Steel	Various Options Available	Bottom	Ground
332L Traffic Control Cabinet						
030-222-40	332L Traffic Control Cabinet with Stove Top and police door.	66.75"H x 24.25"W x 30.25"D	Main Body: 1/8" Aluminum w/ Synthetic Rubber Seal Hardware: Stainless Steel	Various Options Available	Bottom	Ground
30IV Traffic Cabinet						
050-138-10	Single Door, 3 Point Latch, Corbin #2 Lock, Piano Hinge, Wind Stop, and Vent Pocket. Special Feature: Unistruts with spring nuts, and raised back plate	56"H x 30"W x 19"D	Main Body: 1/8" Aluminum w/ Synthetic Rubber Seal Hardware: Stainless Steel	N/A	Knockouts for 2" conduit on bottom of enclosure	N/A

26
Distribution
Centers

NEXT DAY
DELIVERY
within 250 miles

PICKUP
RECYCLING

Sourcing Made Simple with DOT/ITS Network Powering Batteries!

Complete Your Wolf PAC with high performance batteries! Through our more than 25 distribution centers, we meet the demand of delivery, pick up and recycling. Just add your batteries to your Wolf PAC for savings and convenience!





Sourcing Made Simple



Sourcing Made Simple with DOT/ITS Network Powering Batteries!

Traffic management systems demand a robust battery that will perform well, even in harsh environments. Our AGM batteries have been relied on in backup traffic applications nationwide for more than two decades. All batteries include the following features and benefits:

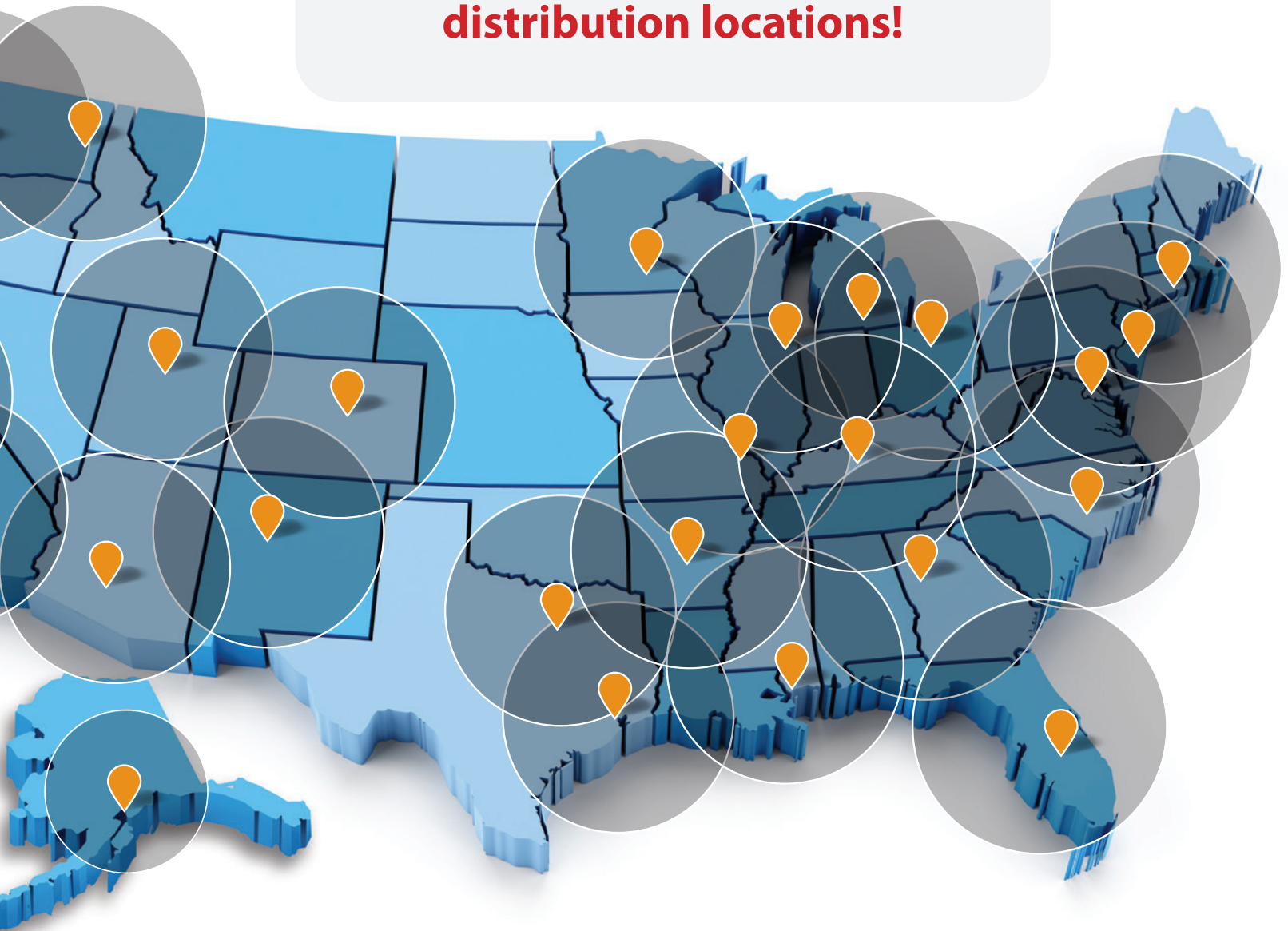
- » Sealed Absorbed Glass Mat technology. Valve regulated for efficient recombination
- » AGM technology eliminates periodic watering, corrosive acid fumes, and spills.
- » Exclusive IPF® Technology, Individual Plate Formation, optimizes power capacity, cell consistency, and long-term reliability.
- » Flame arresting, low pressure, self-sealing valves are 100% factory tested.
- » Over 250 quality control checks through ISO 9001 and ISO14001.
- » Long service life even in the most challenging environments.
- » UL recognized component.
- » Made in USA with U.S. and Imported Materials.
- » 100% Recyclable at end of life.



AGM & Gel Battery Options

STOCK ID	DESCRIPTION	POSTS	WEIGHT
032-042-10	12V 91AH AGM Battery	Epoxy Sealed	52 Lbs.
032-043-10	12V 110AH AGM Battery	Forged Terminals & Bushings	67.5 Lbs.
032-045-10	12V 110AH AGM Battery	Epoxy Sealed	67.5 Lbs.

**FREE Battery Shipping within
a 250 mile radius of our many
distribution locations!**





Sourcing Made Simple

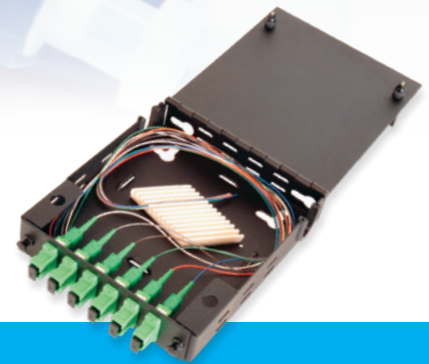
ITS Connectivity Options



Slim Tap

The Slim Tap is an ideal solution when connections needed are moderate and space available is limited. Once the Slim Tap is installed, there is no need to replace the housing for any repairs – you can simply remove the adapter plate, perform any maintenance and re-install once complete.

- » Ideal for DOT cabinets
- » Mountable to the side of rack rails or DIN rails
- » Re-enterable for maintenance and repairs
- » Customizable features such as pigtails, adapters, and adapter panels.
- » Made in the USA



Wall Mount

The FWM Module series is designed for both patch and splice cabling when connections and space requirements are minimal.

- » Ideal for DOT cabinets
- » DIN rail mountable
- » Customizable Configurations
- » Available with custom pre-connectorized pigtails
- » Re-enterable for maintenance and repairs
- » Made in the USA

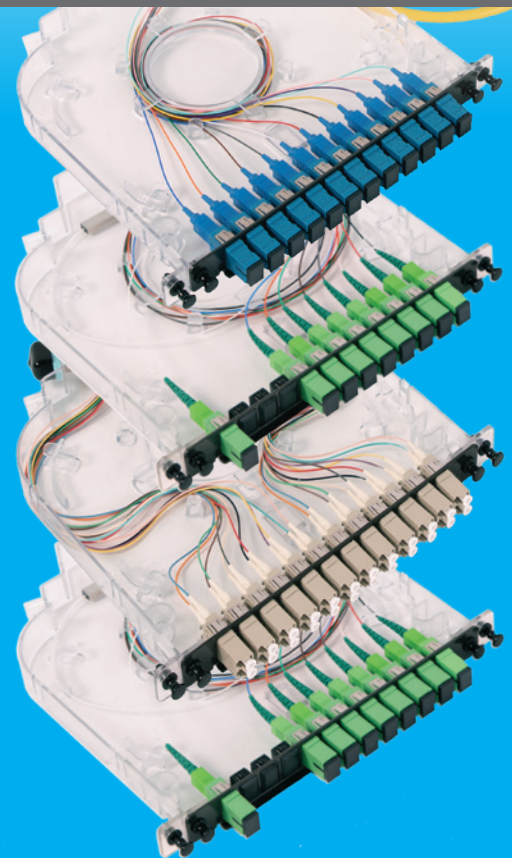
Looking to fiber up your bundle? Add one of these pups to your Wolf PAC! The Multilink Slim Tap, Wall Mounts and Rack Mounts all compliment the Multilink Power Products and offer the ideal solution for fiber networks and DOT/ITS applications. For more information and to specify your needs, contact us today.



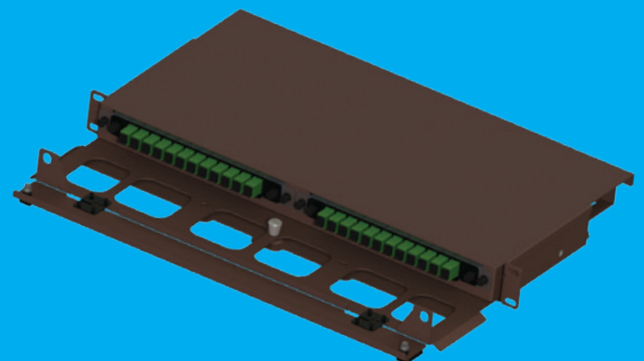
Rack Mount

Rack mounts (patch panels) designed to be mounted on standardized 19" and 23" rack rails. Rack mounts are suitable for various applications and come with many advantages to users, making cable management, connection, and efficiency easier.

- » 5 distinct types of rack mounts available:
 - » Signature Series (CT-X Cassette terminations)
 - » Economy
 - » High Density
 - » Swing-Out
 - » Slide-Out
- » Customizable Configurations
- » Available with custom pre-connectorized pigtails
- » Made in the USA



CT-X Cassettes & Signature Series





Sourcing Made Simple

Multilink is a one-stop-shop as an industry-leading designer, developer, and manufacturer of products serving the DOT/ITS industries.

Our campus-style facility in northeast Ohio offers on-site production from design to the final solution including research, design, engineering, fabrication, powder coating, assembly, and the use of vendor-managed inventory logistics. To put it simply, this unique and all-encompassing approach to product creation allows us to provide a class of products and solutions that are better tailored to our customers' needs than our competitors.

Multilink is an end-to-end communications supplier and integrator for optical networking solutions. Our complete line of power supply modules is designed, tested, and manufactured in northeast Ohio.







Multilink[®]
Simply More...

Distributed by

 **TAPCO**[®]
Safe travels.

1-800-236-0112
www.tapconet.com

 Contract Holder
GS-07F-5924R
GS-07F-0234U

OMNIA
PARTNERS