

SWARCO

McCain PEDESTRIAN SIGNAL HOUSING

12"
16"
ALUMINUM
POLYCARBONATE



The McCain Pedestrian Signal Housing is designed to promote pedestrian safety at intersections. Used in conjunction with standard or LED pedestrian signal modules, the McCain Pedestrian Signal Housing exceeds standards and offers a low maintenance and durable housing solution. The McCain Pedestrian Signal Housing is available in 12" and 16" form factors with a variety of configurations, including die cast aluminum or injection molded polycarbonate construction.



Federal Yellow



Black

KEY BENEFITS

- Highly customizable; including a variety of sizes, fabrication, mounting, and visor options
- Offers rugged aluminum or polycarbonate construction
- Accommodates standard symbol or word pedestrian signal modules including LED
- Increases visibility and impact protection¹

PRODUCT DESCRIPTION

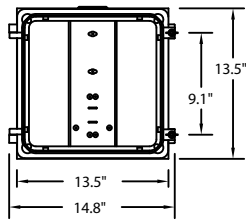
The door on the McCain Pedestrian Signal Housing is equipped with door-hinge hardware that is removable, reversible, or permanently attached.

The door is attached with stainless steel detent-type clevis or roll pins and eye bolt/wing nut assemblies. Two equally spaced mounting lugs, integrally cast into the sides of the 12" and the top and bottom of the 16", allow the doors to hinge from either direction. When clevis pins are used, the door and eye bolt assemblies can be removed and rotated without the use of any tools.

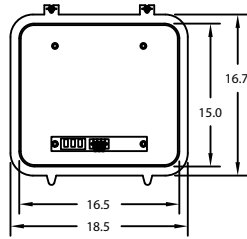
All interior mounting locations on the 16" housing are symmetrically positioned, allowing the rotation of components when using the bi-directional McCain Clamshell Mount to mount to the right or left side.

McCain PEDESTRIAN SIGNAL HOUSING

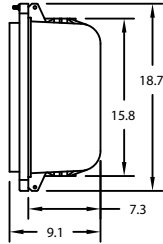
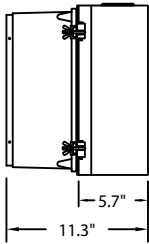
12" HOUSING
FRONT



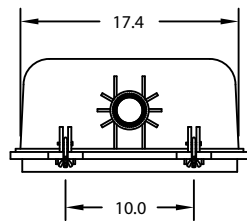
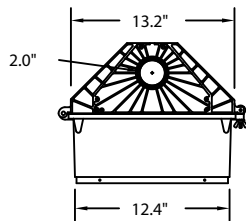
16" HOUSING



SIDE



TOP



STANDARD FEATURES

- Stainless steel hardware
 - Hinge pins; detent-type clevis or roll
 - Eye bolt/wing nuts; latch
- Terminal block with quick-disconnect fittings on one side of each terminal position and screw clamps on the other side

OPTIONS

- Polycarbonate 10% fiberglass fill for added durability²
- Custom terminal blocks
- Door hardware: permanent or removable³
- LED modules
 - International Hand/Man symbol
 - "WALK"/ "DON'T WALK" words
- Visors
 - Vantage visor (16" only)
 - Tunnel
 - Cap (12" only)
- Clamshell mount⁴



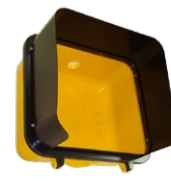
12" 2-section with Tunnel Visors



16" Clamshell Mount



16" Vantage Visor



16" Tunnel Visor



Hand/Man Module

GENERAL SPECIFICATIONS

	12" Housing	16" Housing
Dimensions ⁵ :		
Housing:	13.2"W x 13.2"H x 5.7"D	17.4"W x 15.8"H x 7.3"D
Door:	15"W x 13.5"H x 5.6"D	18.5"W x 18.7"H x 1.8"D
Overall:	15"W x 14"H x 11.3"D	18.5" W x 18.7"H x 9.1"D
Material:	Aluminum: Type 360, reduced corrosion, increased powder coat adhesion Polycarbonate: Ultraviolet and heat stabilized, flame retardant, permanently colored, 10% fiberglass reinforcement ²	
Finishes:	Aluminum: Powder coated Polycarbonate: Colored resins integral to housing	
Colors:	Federal yellow, signal green, black, or custom colors	
Access ⁶ :	Hinged left or right	Hinged top or bottom
Latching System:	Eye bolt assemblies	
Mounting:	Standard signal hardware	
Environmental:	Operating Temperature: -37°C to +74°C Humidity: 0 to 95% (non-condensing)	
Weight:	Aluminum: 9 lbs Polycarbonate: 5 lbs	Aluminum: 10 lbs Polycarbonate: 9 lbs

¹With Vantage Visor™ on 16" housing

²Standard on 12" housing; optional on 16" housing

³Permanent with roll pins or removable with clevis pins

⁴For 16" housing only; housing available pre-drilled for mount

⁵Dimensions are approximate and vary based on material used; door dimensions include tabs

⁶Front door access

SWARCO reserves the right to make changes at any time in order to supply the best product possible.

©SWARCO McCain, Inc. Updated 11/07/2022