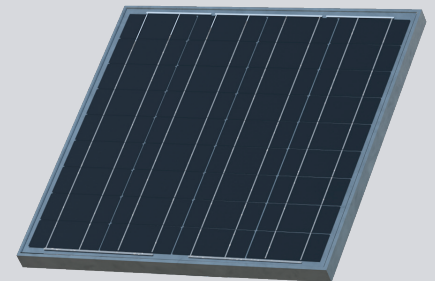


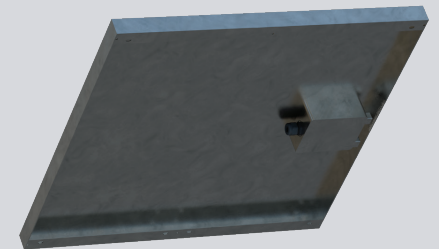
65W SOLAR PANEL

SPECIFICATIONS

POWER	65W
NOMINAL VOLTAGE	12V
OPEN CIRCUIT VOLTAGE	21.66V
SHORT CIRCUIT CURRENT	3.97A
MAXIMUM POWER VOLTAGE	18.65V
MAXIMUM POWER CURRENT	3.77A
GLASS	High transparent, low iron, tempered
FRAME	Heavy-duty anodized aluminum
CONSTRUCTION	Silicon cells encapsulated in double-layer EVA with a white polymer backing
WEIGHT	10.8 lbs
ENCLOSURE	IP67 rated
MOUNTING HARDWARE	Various options available
OPERATING TEMPERATURE RANGE	-40° F to 185° F (-40° C to 85° C)
DIMENSIONS	25.7" W x 25.2" H x 1.4" D



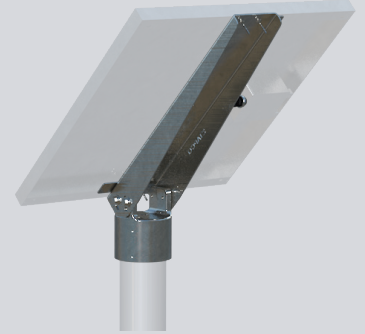
FRONT



BACK

TOP-OF-POLE MOUNTING BRACKET

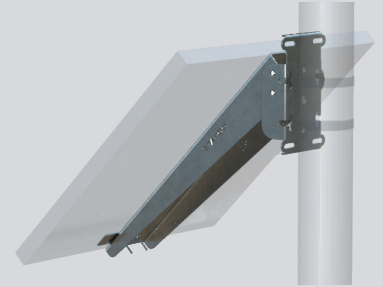
MATERIAL	Aluminum
POLE TYPE	4.5 in. round (shown) or 3 in. round
MOUNTING HARDWARE	Set screws



**TOP-OF-POLE
MOUNTING BRACKET**

SIDE-OF-POLE MOUNTING BRACKET

MATERIAL	Aluminum
POLE TYPE	Universal (4.5 in. shown)
MOUNTING HARDWARE	Banding, U-bolt, or bolt



**SIDE-OF-POLE
MOUNTING BRACKET**