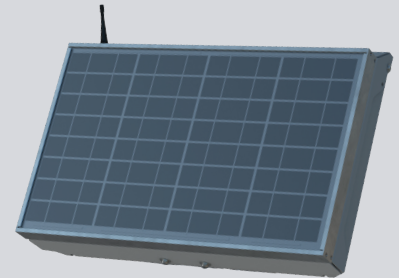


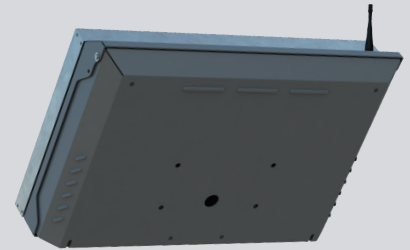
30W TOP-OF-POLE SELF-CONTAINED SOLAR CABINET

SPECIFICATIONS

POWER	30W
NOMINAL VOLTAGE	12 V
BATTERY CAPACITY	Up to 44Ah
BATTERY LIFE SPAN	3-5 years field replaceable
BATTERY TYPE	Sealed lead acid - absorbent glass mat
WIND LOAD RATING	Up to 120 MPH
HOUSING	NEMA 3R type gray power coated aluminum; Other colors available
WEIGHT	42.6 lbs
MOUNTING HARDWARE	Universal aluminum mounting bracket
OPERATING TEMPERATURE RANGE	-40°F to 185°F (-40°C to 85°C)
DIMENSIONS	22.5"W x 15.5"H x 4.75"D



FRONT



BACK