

HIGH WATER - DOG LEG ASSEMBLY

TAPCO High Water Warning Systems detect rising water levels and activate warning alerts, providing approaching drivers with advance warning of real-time road flooding.

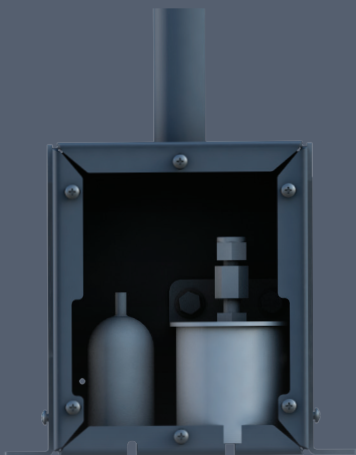
- Activated via real-time water detection
- Adjustable water level threshold
- Provides drivers the opportunity to take alternate routes
- Operates in salt and fresh water
- Solar power option guarantees system operation during power outages
- Remote activation available through BlinkLink[®] software



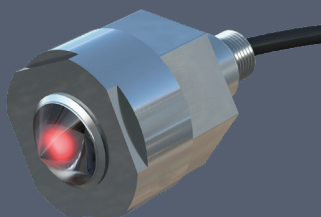
ENHANCEMENT OPTIONS



DOG LEG ASSEMBLY SENSOR



DOG LEG ASSEMBLY WITH
FLOAT AND PRESSURE
SENSORS



SICK WATER SENSOR

WARNING ALERTS

Two LED-enhanced warning alert options are available to warn drivers to turn around.

BLINKERSIGN®



BLINKERBEACON™



SYSTEM LAYOUTS

Single pole with sensor and warning alert is installed in the flood zone. Single detection pole with sensor is installed in the flood zone. Two advance warning poles with warning alerts are installed ahead of the flood zone on either side of the road.

SINGLE-POLE SYSTEM



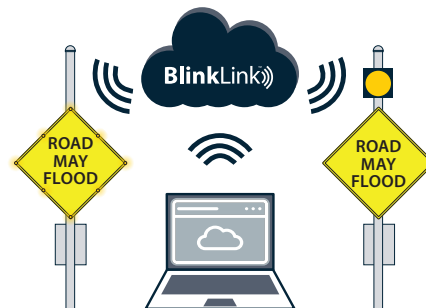
MULTI-POLE SYSTEM



BLINKLINK® SYSTEM MANAGEMENT SOFTWARE

BlinkLink®, powered by TAPCO, is an easy-to-use, cloud-based event management software accessible from any web-enabled device.

Configurable to meet the needs of any agency, BlinkLink® enables authorized personnel to remotely monitor and manage high water warning systems, collect real-time data and receive voice, email and SMS notifications.



(800) 236-0112 TAPCOnet.com