

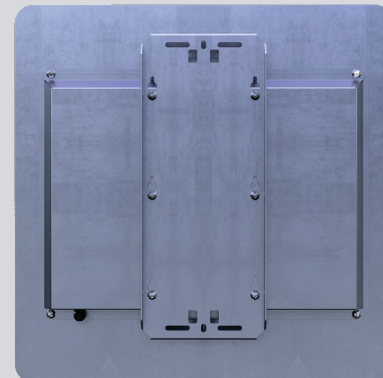
SPECIFICATIONS

POWER	6VDC to 12VDC or low voltage; Current controlled through TAPCO controller
SIGN LEGEND	Various MUTCD-compliant options available (R5-1 shown)
SIGN SUBSTRATE	0.080" highway-grade aluminum; perforated legend
REFLECTIVE SHEETING	3M™ translucent DG3; anti-graffiti overlay
ILLUMINATION	Dusk-to-Dawn or vehicle-activated nighttime illumination
LED TYPE	Environmentally protected, efficient 0.5W
LED COLOR	White (6500K)
LED QUANTITY	Variable to achieve illumination uniformity
LED LIFE EXPECTANCY	50,000 hours
NIGHTTIME LED VISIBILITY	Viewable up to 500 feet; Readable up to 300 feet
OFFSET LEGEND LEGIBILITY	Illuminated sign legible without retroreflectivity or headlights; legible at twice the distance of standard signs*
LED WIRING PROTECTION	Protected by sealed aluminum enclosure
MOUNTING BRACKETS	Universal mounting brackets included
MOUNTING HARDWARE	Various options included
OPERATING TEMPERATURE RANGE	-40° F to 122° F (-40° C to 50° C)
DIMENSIONS	Stop (R1-1): 30" L x 30" W, 36" L x 36" W Wrong Way (R5-1a): 42" L x 30" W Do Not Enter (R5-1): 30" L x 30" W, 48" L x 48" W (shown)

* According to the results of a closed-course driver trial and statistical analysis conducted by the Texas A&M Transportation Institute (TTI).



FRONT



BACK