

# INDUSTRIAL SAFETY SOLUTIONS

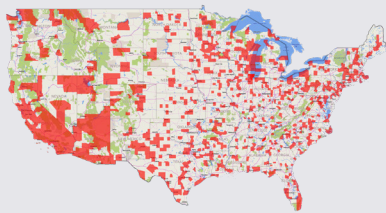




As an industry-leading innovator, TAPCO® manufactures, services and distributes a wide portfolio of traffic and parking safety solutions designed to increase safe travels for all. Since 1956, we have set the standard for delivering reliable, cutting-edge traffic safety enhancements. From our world-renowned line of LED-enhanced BlinkerSign® solutions to our pedestrian crossing products and early detection warning systems, safety is at the heart of all TAPCO® innovations.

### Generations of Expertise

Working alongside traffic professionals for more than 60 years gives our team an exclusive perspective on the past, present and future needs of the traffic and parking safety industry.



### A Nationwide Reach

With successful solution installations throughout all 50 states, we understand the safety concerns communities face across the nation.

### Innovative, Smart City Technology

Our mission is to continue to lead the industry with an innovative, customer-focused approach that evolves with the technological demands of our customers.



### Award-Winning Mindset

As a family-owned company, we take pride in establishing and maintaining our innovative culture.

# Table of Contents

**Parking and Entry Systems.....4-13**

- 24/7 Flashing BlinkerStop® .....5
- Facility Crossing.....6-7
- Gate Operators.....8
- Reverse Entry Alert Systems (READs).....9
- Driver Feedback.....10
- Vehicle Movement and Detection.....11
- Blank-Out Signs.....12
- Parking Logix Open Space™ .....13

**Freight and Warehouse Safety.....14-17**

- Forklift Warning.....15
- StreetSmart.....16
- Overheight.....17
- Engineered-to-order .....24
- Custom Signage.....25

**Building and Information Solutions.....18-21**

- Way Finding Signage.....19
- Mass Notification Systems.....20-21
- Camera Systems.....22
- BlinkerSigns.....23



## Industrial Solutions:

With millions of dollars on the line, the backbone of every warehouse and manufacturing facility is the set of industrial products and solutions that keep it running. The right ones can streamline operations, boost productivity and remove hassles and headaches — ultimately improving the bottom line.

### Parking and Entry Systems

Helping drivers in industrial areas find their way, look out for pedestrians and travel at appropriate speeds keeps operations running smoothly and safely.



### Freight and Warehouse Safety

With forklift operators, truck drivers and foot traffic all interacting, maximizing safety requires solutions designed with industrial facilities' needs in mind.



### Building and Information Solutions

When people are alerted to emergencies, can easily navigate to where they need to go and are able to access available parking, industrial facilities ensure peak productivity.



# PARKING AND ENTRY SYSTEMS



Entrances, exits and parking areas are often hotspots for safety and security issues — not to mention inefficiency. Fortunately, robust parking and entry systems can:

- Capture drivers' attention
- Increase speed limit compliance
- Improve wayfinding for all
- Protect pedestrians and other vulnerable road users
- Optimize facility security

Because every industrial application is unique, leveraging customizable parking and entry systems with a variety of configuration options is pivotal.

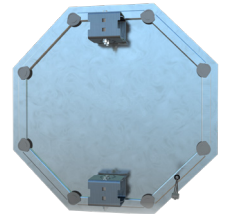
# PARKING AND ENTRY SYSTEMS

## BLINKERSTOP®

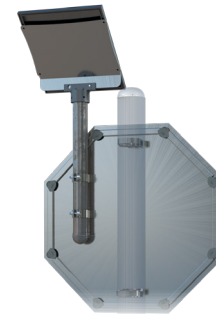
Engineered to capture drivers' attention, BlinkerStop® signs feature highly visible red LEDs along the edge of the sign face to increase compliance and improve safety. The outdoor solar-powered 24/7 Flashing BlinkerStop® and the indoor AC-powered BlinkerStop® signs are available for applications such as parking lots, facility entrances/exits, connecting roadways and more.

### KEY BENEFITS:

- Indoor and outdoor options available
- Visible from more than 1,000 feet away during the day and more than 1 mile away at night
- Rugged, lightweight and easy to install
- Features 3M sheeting for maximum visibility
- Programmed to flash 24/7
- Made in the USA
- Enclosed wiring on indoor signs



BACK OF INDOOR SIGN



BACK OF OUTDOOR SIGN



# PARKING AND ENTRY SYSTEMS

## PEDESTRIAN CROSSING

Leverage systems that provide high-visibility, real-time warning to drivers that pedestrians are in or about to enter a crosswalk up ahead. TAPCO® BlinkerSigns are an inexpensive way to give pedestrians the safety they need and drivers the visibility they deserve.

- Multiple activation options using solar power and wireless technology
- Great option for dangerous school routes or busy roundabouts
- Cost effective, with minimal labor required

### **SAFEWALK® CROSSWALK ILLUMINATOR**

Improve pedestrian visibility in poorly lit areas with the SafeWalk® Crosswalk Illuminator, a simple safety enhancement that illuminates pedestrians from one end of the crosswalk to the other using unique, dual-light technology. Built to last, the illuminator:

- Meets the 20 LUX minimum recommended by the FHWA
- Features a rugged, weather-resistant enclosure
- Comes with adjustable brackets that allow for precise light focus at most crossings



# PARKING AND ENTRY SYSTEMS

## PEDESTRIAN CROSSING

### LED ALERTS AND ACTIVATIONS

TAPCO® Pedestrian Crosswalk Systems are typically user-activated via a push button or passively activated via infrared bollards and time clock scheduling. More options, such as thermal detection, are available upon request.

#### BLINKERSIGN®



#### RECTANGULAR RAPID-FLASHING BEACON



#### BLINKERBEACON™

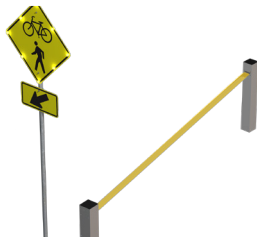


#### PUSH BUTTON



- NEMA and ADA compliant
- Black also available upon request

#### INFRARED BOLLARDS



- Pedestrian detection up to 40 feet away
- Battery power option

#### TIME CLOCK



- Adjustable activation times
- Up to 16 activation schedules per day

#### THERMAL DETECTION

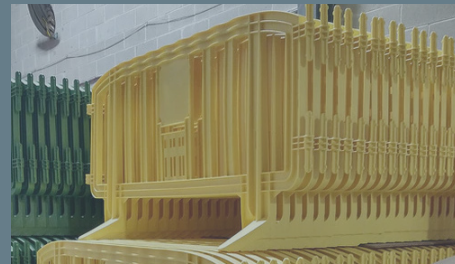


- Night vision
- Adaptable, with easy integration

### RELATED SAFETY PRODUCTS



In-Street Crosswalk Signs



Crowd Control Barricades



Cones

# PARKING AND ENTRY SYSTEMS

## GATE OPERATORS

### MICRODRIVE GATE



- Fast opening times
- Long life cycle
- Reliable and durable
- Extremely low operational costs
- Easy handling
- Minimal maintenance required

### SLIDE AND SWING GATES



- Automatic magnetic limits and lock power
- Built-in electronic reverse system and power and alarm reset switches
- Anti-tailgating and partial open features
- Overlap feature for bi-parting swing gate
- Battery backup available

### ADDITIONAL INFORMATION AVAILABLE

Visit us online at [TAPCO.net.com](http://TAPCO.net.com)

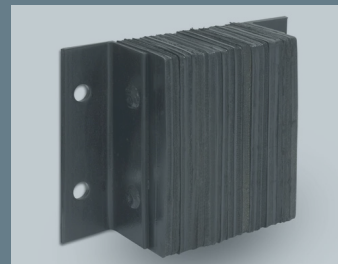
### RELATED SAFETY PRODUCTS



**In-Ground Flexible  
Bollards**



**Bollard Covers**



**Loading Dock  
Bumpers**



**Corner / Column  
Protectors**



# PARKING AND ENTRY SYSTEMS

## REVERSE ENTRY ALERT DETECTION SYSTEM (READS)

Designed for entry control points, the Reverse Entry Alert Detection System (READS) detects wrong-way vehicles, providing warning to motorists and nearby personnel to enhance the safety and security of facilities. Audio and visual warning alerts can be used in conjunction with entry gates to facilitate regimented passage.

- Solar and AC power options available
- Text and email alerts to security personnel
- Up to 4 lanes of detection via loops, radar or thermal sensors
- System status reminders (online or bypass) via lights and audible alerts
- Wireless communication with multiple entry points
- Optional deterrent gates and security barriers
- Optional cameras to facilitate image and video capture



# PARKING AND ENTRY SYSTEMS

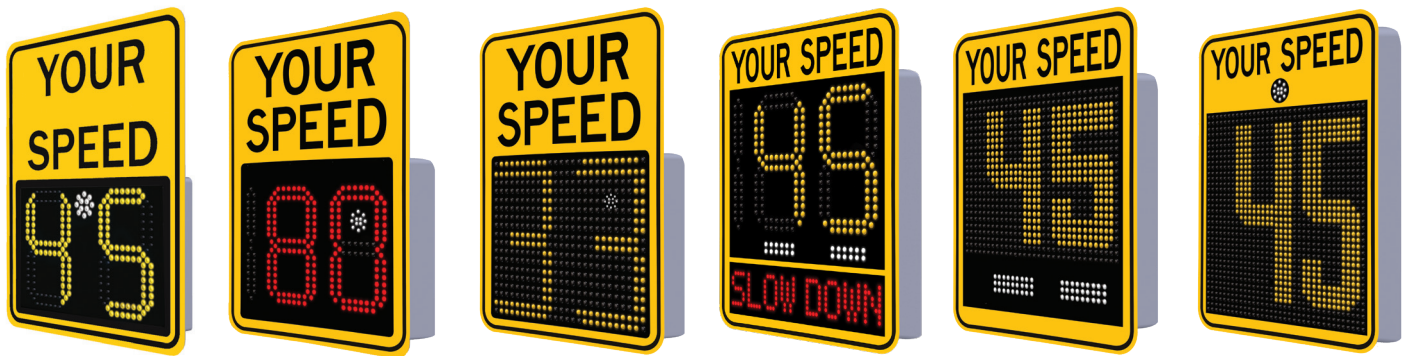
## DRIVER FEEDBACK

Designed to alert drivers of their speeds through radar technology, driver feedback signs are proven to reduce speeds by as much as 20 percent in certain locations.

TAPCO® provides driver feedback signs that offer exceptional visibility and power efficiency to help control speeds in your facility for years to come.

- Sign face colors include white, yellow and fluorescent yellow-green
- Built-in ambient light sensor automatically adjusts LED brightness
- Adjustable speed detection threshold
- AC, 4-cell battery and various solar panel power options
- Easily mounts onto new or existing sign posts
- Programmable violator strobe alerts drivers traveling above customer-designated speeds

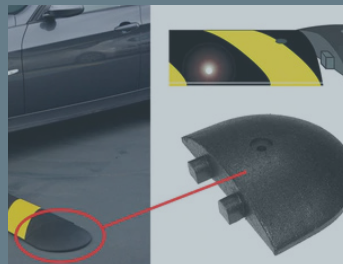
### SAFEPACE® EVOLUTION SERIES



### RELATED SAFETY PRODUCTS



Speed Humps and  
Tables



Speed Bumps



Vehicle Stops



Solar Strobe Lights

# PARKING AND ENTRY SYSTEMS

## VEHICLE MOVEMENT AND DETECTION

Designed specifically for blind turns and other hazardous intersections, a vehicle movement and detection system detects when traffic is approaching and notifies drivers and pedestrians via flashing LED-enhanced alerts.

This awareness enables drivers and pedestrians to take appropriate caution, ensuring they can avoid a collision.



### RELATED SAFETY PRODUCTS



Guardian Camera



Thermal and Fixed Dome Cameras



RFID Sensors



Heavy-Duty Acrylic Convex Mirrors

# PARKING AND ENTRY SYSTEMS

## BLANK-OUT SIGNS

Blank-out signs are available in a tremendous variety, including single and multi-level space availability tower signs; highway toll plaza and weigh station signs; FHWA, MUTCD, regulatory and warning signs; traffic controller signals and LED parking and warning safety signs. All signs can feature:

- Custom messages, sizes and cabinet colors
- Ground or ceiling mounting



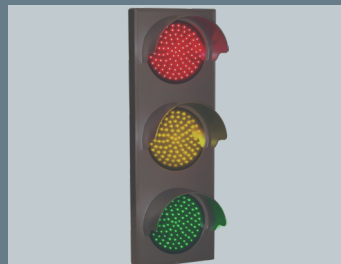
This TCL Series outdoor blank-out sign is designed with super bright LEDs and a contrasting face, making it highly readable in direct sunlight. The sign message is formed by visible LEDs on a black sign face designed to illuminate the message(s) when turned on and blank out or extinguish the message when turned off.



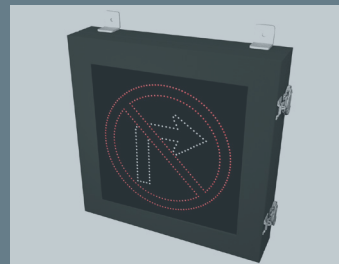
### RELATED SAFETY PRODUCTS



**LED Traffic Controller Signal (Vertical)**



**LED Vertical Traffic Controller**



**No Right Turn LED Blank-out Sign**



**TCL Direct-View LED Sign**

# PARKING AND ENTRY SYSTEMS

## PARKING LOGIX OPEN SPACE™

Whether you're keeping track of parking availability in an indoor or outdoor lot, on one level in a single lot or on multiple levels and many lots, OpenSpace™ is the parking guidance system that will fill your spots.

OpenSpace™ is simple to use, highly accurate and cost effective. It offers parking guidance to direct cars to open spots, increasing usage, revenues and customer satisfaction.

Wireless sensors keep track of each vehicle entering and leaving your lot. Data is automatically sent to the cloud and displayed on signs, your website or integrated apps in real time.



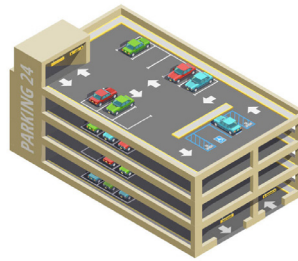
### INDOOR

Whether your lot is off-street, in a garage or on a rooftop, OpenSpace™ can guide parkers into open spots.



### OUTDOOR

With embedded sensors installed in minutes, your surface lot can keep count of available spots.



### MULTI-LEVEL

Our simple, intuitive system can keep track of open spots on up to nine floors, guiding parkers to available parking.



### MULTI-LOT

The system can also keep track of multiple lots, entry and exit points and even display data, all on one sign.



# FREIGHT AND WAREHOUSE SAFETY



The importance of safety in an industrial setting cannot be overstated, and maximizing safety requires advanced solutions that can:

- Reduce conflicts with forklift operators and foot traffic
- Communicate important information
- Minimize overheight accidents

On top of safety benefits, the right freight and warehouse safety solutions can save a tremendous amount of money and minimize liability.

# FREIGHT AND WAREHOUSE SAFETY

## STREETSMART™

StreetSmart™ LED displays are ideal where traditional text signs are not effective or in situations where multi-messaging is required. Communicate directly to customers about ads, sales, events, news and notices boldly and economically. Messages are clear 1,000 feet away, brightly visible even in direct sunlight.

- Additional outdoor use cases include ship docks, construction work, tunnels and subways or custom applications
- Industrial-grade, NEMA 3R Enclosure protects against the elements
- Free-standing and structure-mounted applications available
- Industry-leading 5-year warranty
- Supports Alpha and NTCIP Players and is compatible with leading industry protocols
- Connect to a TAPCO® Mass Notification System for seamless messaging



# FREIGHT AND WAREHOUSE SAFETY

## FORKLIFT WARNING SYSTEM

Reduce conflicts between forklifts, foot traffic and other mobile equipment in your facility with the Forklift Warning System.

Alert pedestrians to the presence and movement of vehicles with a multitude of configuration options to choose from.

- LED-enhanced warning alert options include BlinkerSign®, BlinkerBeacon™, rectangular rapid-flashing beacons (RRFBs), strobes, illuminators and audible alert enhancements
- Solar or AC power options
- Passive detection or user-actuated activation options
- Custom sign faces available based on customer preference
- Hardwired and wireless communication dependent on application needs
- Intersection Conflict Warning System also available



### RELATED SAFETY PRODUCTS



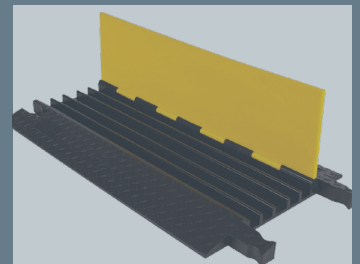
**Safety Border Caution  
Mirror For Indoor Use**



**Forklift Traffic  
Floor Signage**



**Vehicle Stopper  
2-Line Rail System**



**Cable Protectors**



# FREIGHT AND WAREHOUSE SAFETY

## OVERHEIGHT WARNING SYSTEM

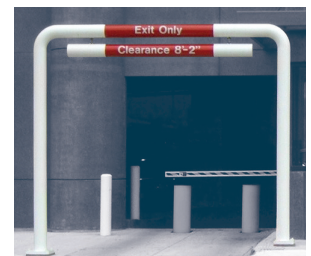
TAPCO® Overheight Warning Systems detect overheight vehicles in advance of low structures and alert drivers of an impending collision.

Infrared sensors are mounted on either side of the road ahead of the low structure, establishing a predetermined detection height threshold. When an overheight vehicle breaks the infrared beam, the system sends a wireless signal to activate the warning alert(s), notifying the driver that their vehicle won't clear the structure ahead.

- Proven to minimize the number of accidents caused by overheight vehicles
- Reduces unplanned downtime costs associated with overheight incidents
- Maximizes supply chain safety and efficiency
- Solar or AC options available
- Dual beams available to generate directional detection logic



CLEARANCE BAR AND BLINKERSIGN®



CLEARANCE BARS



# FREIGHT AND WAREHOUSE SAFETY

## ENGINEERED-TO-ORDER (ETO)

### NEED SOMETHING MORE SPECIALIZED?

We realize no safety enhancement project is the same. That's why we offer engineered-to-order solutions designed for your specific needs. You'll work with our innovative engineering staff to outline your safety concerns, and we'll customize a solution utilizing a variety of tools to build a system tailored to you.

To customize your facility, call **(800) 236-0112** or email **blinkersales@tapconet.com**.



# FREIGHT AND WAREHOUSE SAFETY

## CUSTOM SIGNAGE

With decades of experience creating custom signs, TAPCO's sign shop can manufacture a sign to your exact specifications.

Signs can be either standard or LED enhanced, and ruggedized versions are available.



**ADDITIONAL INFORMATION AVAILABLE**  
Visit us online at [TAPCO.net.com](http://TAPCO.net.com)

# BUILDING AND INFORMATION SOLUTIONS



Sharing critical information and ensuring people can seamlessly navigate around an industrial facility saves time — especially when every second counts. With effective building and productivity systems, facilities can:

- Grab people's attention
- Share alerts and messages quickly and easily
- Help people find their way

Engineered with industrial settings in mind, these systems streamline everyday operations and can even save lives in an emergency.

# BUILDING AND INFORMATION SOLUTIONS

## WAYFINDING SIGNAGE

The science of wayfinding includes municipal planning, streetscape infrastructure, traffic patterns and the cognitive process of navigation. We can work with you to develop a complete wayfinding system that represents the character of your city or neighborhood. TAPCO® has the ability to make custom-shaped signs with unique artwork and Pantone colors.

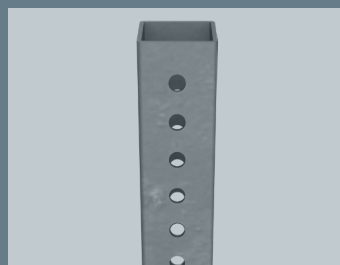


Additional poles, bases and breakaway anchors are available.

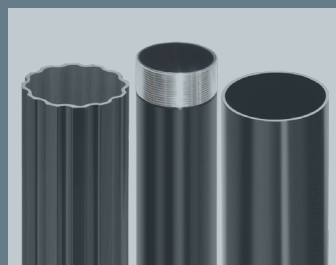
### RELATED HARDWARE PRODUCTS



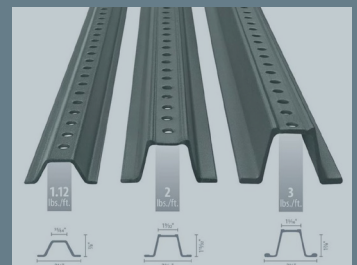
**Rubber Form and  
Portable Bases**



**2" x 2"  
Square Post**



**StreetScape Pole**



**U-Channel Posts**

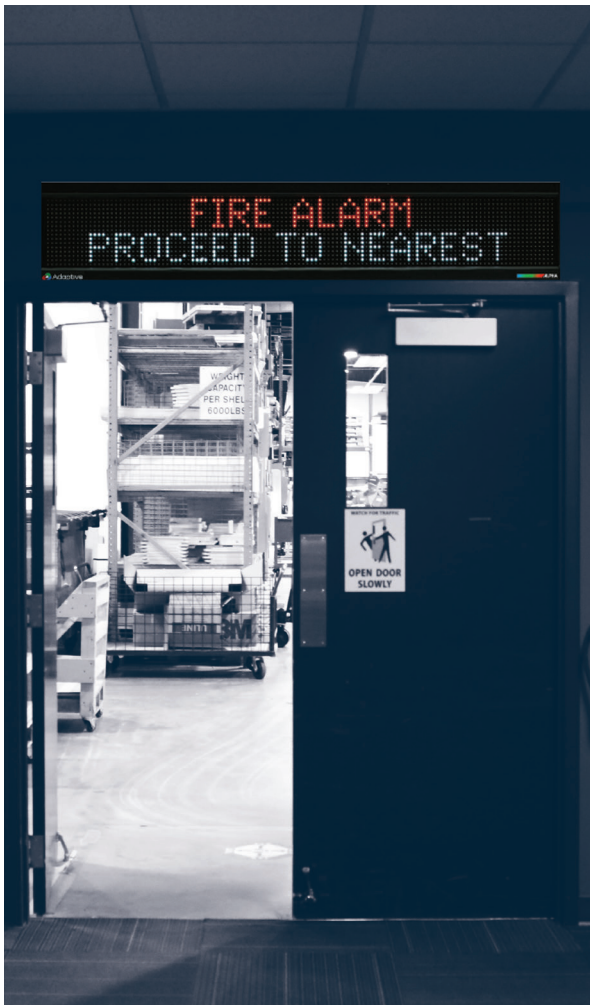
# BUILDING AND INFORMATION SOLUTIONS

## MASS NOTIFICATION SYSTEMS (MNS)

Display critical alerts and messages via highly visible, full-color LED displays rated for both indoor and semi-outdoor applications while meeting or exceeding industry standards.

Ensure every employee and visitor receives critical information throughout your facility, especially in areas where noise levels are high and mobile devices are not permitted or accessible.

- Supports integration with leading fire control panel manufacturers and network-based emergency notification providers through open communications protocol
- Pre-programmed, first responder and priority messaging
- Scrolling and flashing text
- Messaging by groups or zones
- Reliable and energy efficient
- High visibility and readability up to 150 feet (50 meters)
- Displays date, time, weather and other general messages during non-critical situations
- Supports secure encrypted network protocol



# BUILDING AND INFORMATION SOLUTIONS

## MASS NOTIFICATION SYSTEMS (MNS)

The ALPHA Premier Information Display (PID) variable message sign is designed and built for long-term performance with single-faced or double-faced options available.

- Rated for outdoor use in challenging environments; stands up to industrial use and inclement weather
- Wall/ceiling mounting and adjustable track mounting bolt for hanging provide versatility for installation in any environment
- Protocol provided for communication integrations
- 32k minimum color display for high color graphics and luminosity
- Ambient light sensor provides auto dimming to improve visibility and increase safety



**ADDITIONAL INFORMATION AVAILABLE**  
Visit us online at [TAPCO.net.com](http://TAPCO.net.com)

# BUILDING AND INFORMATION SOLUTIONS

## CAMERA SYSTEMS

Well-known for its cutting-edge technology and over 60 years of leadership in the traffic safety industry, Ver-Mac brings its expertise to the industrial security industry.

### WATCH TOWER OBSERVER SERIES

This high-quality mobile video surveillance system comes with a high-performance IP dome camera mounted on a compact trolley for rapidly deployable solutions. This is the only eco-friendly product of its kind on the market.

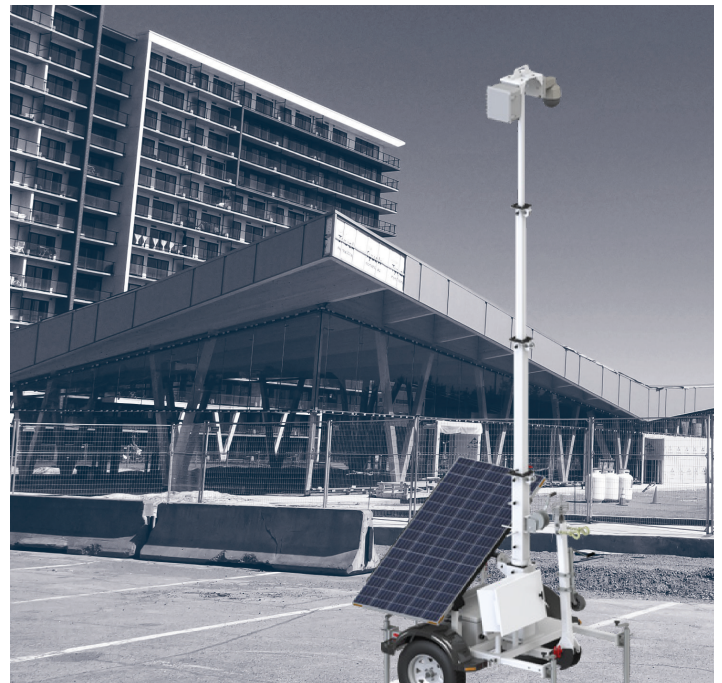


- Record 24/7 for up to 5 days
- Record continuously or on a schedule
- Access videos in real time on any web-enabled device
- Get long-lasting power and years of continuous operation
- charge batteries in less than 3 hours



### WATCH TOWER OBSERVER ELITE SERIES

This durable and reliable mobile solar video surveillance system comes with single or dual HD IP Video PTZ cameras. Built to last, this cost-effective solution is designed to perform year-round in all weather and lighting conditions.



- Get solar-powered surveillance with rechargeable batteries
- Record locally 24/7 for up to 7 days
- Get live footage or recorded images in all lighting conditions
- View real-time video streaming in the cloud from any web-enabled device





# BUILDING AND INFORMATION SOLUTIONS

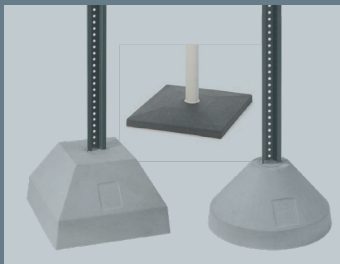
## BLINKERSIGNS

BlinkerSign® LED-enhanced signs feature highly visible LEDs embedded into the perimeter of the sign face that flash to capture drivers' and pedestrians' attention. LEDs can be amber, red, orange or white, depending on the sign face.

In addition, each sign can use various activation and control options based on customer need.



### MOUNTING OPTIONS



Concrete and  
Portable Bases



Ceiling Mount



Warehouse Rack  
Mount



Wall Mount



 (800) 236-0112  [TAPCOnet.com](https://www.TAPCOnet.com)