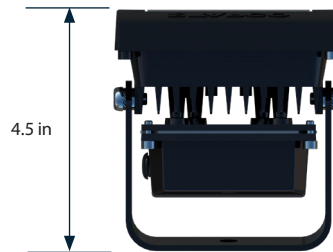
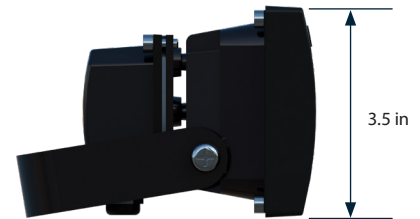


SAFEWALK™ CROSSWALK ILLUMINATOR

FEATURES AND BENEFITS

Increase pedestrian visibility at poorly lit, two-lane crossings with the SafeWalk™ Crosswalk Illuminator – a simple safety enhancement to TAPCO Pedestrian Crosswalk Systems.

- Flood light illuminates the approach area of the crosswalk
- Beam light projects outward, illuminating the middle of the crosswalk
- Activates concurrently with LED-enhanced warning alerts
- Adjustable brackets allow for precise light focus at most crossings
- Rugged enclosure to withstand weather and surrounding environment



Bottom View

SPECIFICATIONS

POWER INPUT	12VDC
POWER CONSUMPTION	700mA to 1.4A
LIGHT DISTANCE	6 by 15 feet per illuminator
INSTALLATION HEIGHT	12 to 15 feet
HOUSING	Aluminum and weather resistant polycarbonate
OPERATING TEMPERATURE RANGE	-40°F to 176°F (-40°C to 80°C)



SYSTEM CAPABILITIES

COMPATIBILITY	RRFB, Blinkersign® and BinkerBeacon™ Pedestrian Crosswalk Systems
LIGHT VITALITY	2 LEDs engineered to light up a crosswalk
LIGHT DURATION	Varies based on preprogrammed settings - works in conjunction with warning alerts
WIND LOAD RATING	Up to 120 mph*

*Dependent upon pole size and system arrangement



(800) 236-0112

TAPCOnet.com