

# FG 300 MODEL UR

## HIGH - PERFORMANCE SURFACE MOUNT POST

### BASE OPTIONS:

- ☒ SELECT DESIRED POST  
☐ UR GRADE

- ☒ SPECIFY DESIRED HEIGHT  
☐ 18" ☐ 36"  
☐ 24" ☐ 42"  
☐ 28" ☐ 42"  
☐ CUSTOM (SEE NOTE 4)

- ☒ SELECT DESIRED POST COLOR  
☐ WHITE  
☐ YELLOW  
☐ ORANGE  
☐ CUSTOM (SEE NOTE 3)

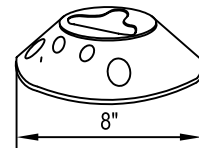
- ☒ SELECT DESIRED REFLECTIVE SHEETING  
☐ REFLEXITE AR 1000  
☐ 3M HIGH INTENSITY GRADE  
☐ 3M FHIP

- ☒ SELECT DESIRED SHEETING COLOR  
☐ WHITE  
☐ YELLOW  
☐ BLUE  
☐ CUSTOM (SEE NOTE 3)

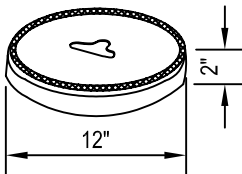
- ☒ SELECT DESIRED BASE  
☐ 1 LB. LITE BASE - BLACK ONLY  
☐ 1.5 LB. HEAVY DUTY BASE - COLORS ONLY  
☐ 10 LB GREEN CROSS BASE  
☐ INVIS-BASE (FLUSH MOUNT)  
☐ METRO BASE



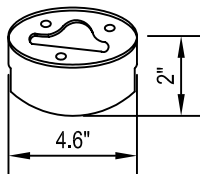
1.5 LB HEAVY DUTY  
BASE COLORS ONLY



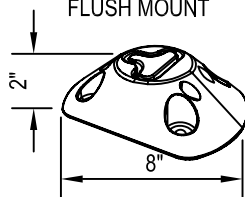
1 LB LITE BASIC - BLACK



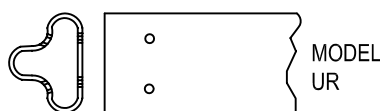
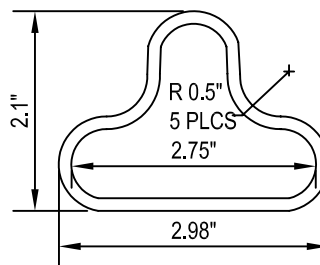
10 LB GREEN CROSS  
BASE



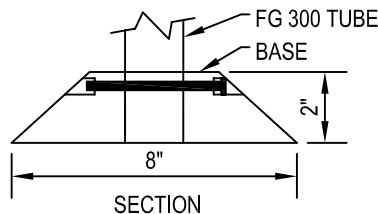
INVISBASE  
FLUSH MOUNT



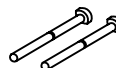
METRO BASE



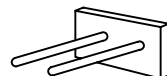
MATERIAL:  
POLYURETHANE



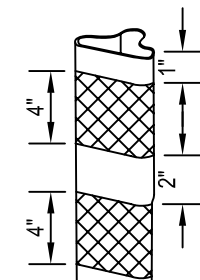
SECTION



QUICK RELEASE PINS



PIN REMOVAL TOOL



SHOWN WITH TYPICAL  
REFLECTIVE TAPE  
APPLIED

### NOTES:

1. INSTALLATION TO BE COMPLETED IN ACCORDANCE WITH MANUFACTURER'S SPECIFICATIONS.
2. DO NOT SCALE DRAWINGS.
3. POSTS AND REFLECTIVE SHEETING ARE AVAILABLE IN CUSTOM COLORS. CONTACT MANUFACTURER.
4. FLEXI-GUIDE POSTS CAN BE CUT TO ANY LENGTH YOU DESIRE. CALL FOR DETAILS.
5. POSTS MAY BE ORDERED W/ FACTORY APPLIED, HIGH INTENSITY OR PRISMATIC SUPER HIGH INTENSITY RETRO-REFLECTIVE SHEETING. SPECIFY TYPE, COLOR AND SIZE WHEN ORDERING.
6. CONTRACTORS NOTE: FOR PRODUCT AND COMPANY INFORMATION VISIT [www.CADdetails.com/info](http://www.CADdetails.com/info) REFERENCE NUMBER 644-033.

Distributed in the United States by



5100 West Brown Deer Road  
Brown Deer, WI 53208

1-800-236-0112  
[www.tapconet.com](http://www.tapconet.com)



Contract Holder  
GS-07F-5924R  
GS-07F-0234U

## FG 300 Model UR Channelizer Post Material Specifications

### 1) Design

The channelizer post shall consist of a modified T-shaped tubular post a minimum of 3.00 inches wide by 2.00 inches deep, with 0.125 inch (min.) walls, comprised of flat front and curved rear surfaces and sides to create areas of opposing compression stresses on the inner and outer walls when impacted resulting in superior rebound. All channelizer posts shall be capable of sustaining a minimum of twenty five (25) direct wheel-over impacts at 60 MPH (100 km/h) without damage to the post or the reflective sheeting applied to the post. All posts shall be easily replaceable. All posts shall be constructed of UV-stabilized thermo-plastic polyurethane (TPU) for superior durability, conforming to the following material specifications:

Property	ASTM Test	Results
Specific Gravity (min.)	D 792	1.10
Hardness (min.)	D 2240	80 A
Tear Strength (min PSI)	D 624, Die C	600
Tensile Strength @ yield, (min PSI)	D 412	4,000
Tensile Elongation @ break (min. %)	D 412	600
Cold Temp. Impact Test (-7° F)	FL/DOT	Pass

### 2) Bases

Channelizer posts shall mount to a base unit with two (2) plastic locking pins. For highest visibility and durability, posts shall be mounted to bases of the same color as the post and curb and the corresponding lane line (yellow & yellow, white & white, etc.) and shall be 1.5 # in weight. All bases shall be constructed of a high-impact thermo-plastic styrenic alloy conforming to the following material specifications:

Property	ASTM Test	Results
Specific Gravity (min.)	D 792	1.02
Gardner Impact (min.)	N/A	160
Flexural Strength (min.)	D 790	5,500

### 3) Florescent and Standard Colors

Channelizer posts and bases shall be constructed of UV-stabilized polymers and colors. The color shall be solid throughout and stabilized to resist UV degradation. In construction work zone areas where orange devices are used, all materials shall be Florescent Orange to improve visibility in low light conditions.

Distributed in the United States by



5100 West Brown Deer Road  
Brown Deer, WI 53208

1-800-236-0112  
www.tapconet.com



## FG 300 Model UR Channelizer Post Material Specifications

### 4) Locking Pins

The channelizer posts shall be secured to the base units with rust-proof black plastic locking pins conforming to the same material specifications as the base units to prevent dislocation when posts are impacted and to ease replacement of old posts.

### 5) Reflective Sheeting

All posts shall have retro-reflective sheeting applied. The minimum reflective sheeting shall be two (2) 6-inch wide wraps of sheeting the same color as the post applied one (1) inch down from the top of the post with a six (6) inch gap between wraps. The sheeting shall be Reflexite<sup>®</sup> AR 1000 cube-corner micro-prismatic reflective sheeting for superior brightness, scratch resistance and durability.

### 6) Lengths

Channelizer posts shall be available in lengths from 16 to 48 inches, as specified in the construction plans or procurement details.

### 7) Installation

Channelizer posts shall be secured to the roadway with removable and reusable one-piece anchor bolts with a finished hex head, integral washer, dual lead threads and chamfered tip. One-piece bolts shall be used to eliminate improper assembly; dual-thread bolts shall be used to prevent bolts spinning in holes when tightened. All channelizer posts shall be completely removable with standard power tools. Alternatively, posts shall be adhered to the roadway with approved bituminous adhesive or pressure-sensitive synthetic butyl rubber pads, min. 0.125" thick.

### 8) Packaging

Channelizer posts and bases shall be packaged in boxes of 25 pieces. A sufficient quantity of pins shall be supplied to secure all posts to the bases.

### 9) NCHRP 350 Acceptance

The channelizer posts shall be fully crash-tested on the AASHTO's NTPEP Test Deck and meet requirements for Category 1 devices as specified in NCHRP Report # 350. All channelizer posts shall have the acceptance of the U.S. Department of Transportation, Federal Highway Administration. Certifications of acceptance to these standards must be supplied by the manufacturer upon request.

Distributed in the United States by



5100 West Brown Deer Road  
Brown Deer, WI 53208

1-800-236-0112  
[www.tapconet.com](http://www.tapconet.com)

