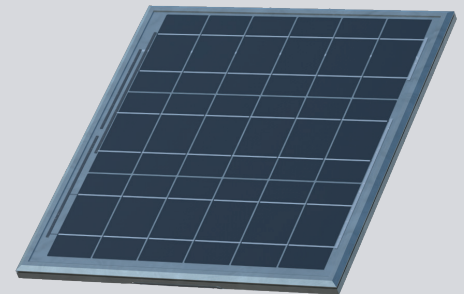


26W SOLAR PANEL

SPECIFICATIONS

POWER	26W
NOMINAL VOLTAGE	6V
OPEN CIRCUIT VOLTAGE	10.4V
SHORT CIRCUIT CURRENT	3.24A
MAXIMUM POWER VOLTAGE	8.8V
MAXIMUM POWER CURRENT	3.06A
GLASS	Tempered
FRAME	Anodized aluminum
CONSTRUCTION	Silicon cells encapsulated in double-layer EVA with a white polymer backing
WEIGHT	4.5 lbs
ENCLOSURE	IP67 rated
MOUNTING HARDWARE	Various options available
OPERATING TEMPERATURE RANGE	-40° F to 194° F (-40° C to 90° C)
DIMENSIONS	18" W x 21" H x 1.5" D



FRONT



BACK

SMALL TOP-OF-POLE BRACKET

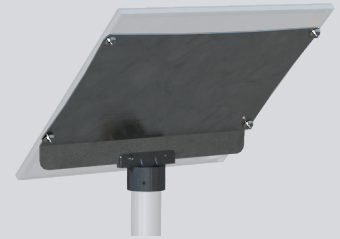
MATERIAL	Aluminum
POLE TYPE	2-3/8 in. round (shown), 2 in. and 2.5 in. Square
MOUNTING HARDWARE	Set screws

LARGE TOP-OF-POLE BRACKET

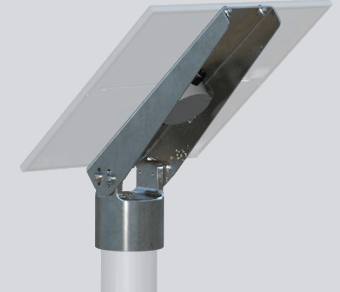
MATERIAL	Aluminum
POLE TYPE	3 in. and 4.5 in. round (shown)
MOUNTING HARDWARE	Set screws

SIDE-OF-POLE BRACKET

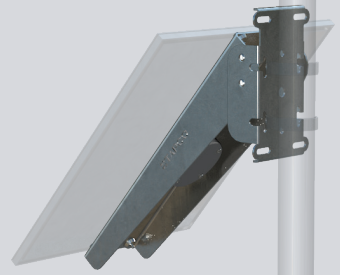
MATERIAL	Aluminum
POLE TYPE	Universal (2-3/8 in. shown)
MOUNTING HARDWARE	Banding, U-bolt, or bolt



SMALL TOP-OF-POLE BRACKET



LARGE TOP-OF-POLE BRACKET



SIDE-OF-POLE BRACKET