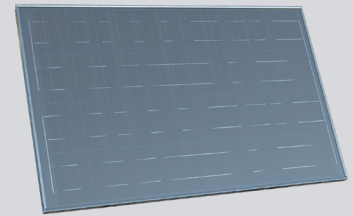


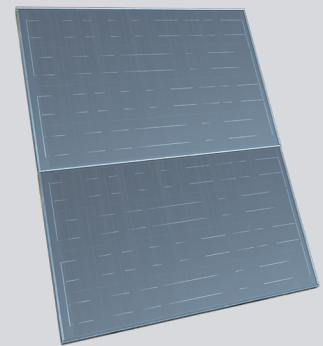
85W SOLAR PANEL

SPECIFICATIONS

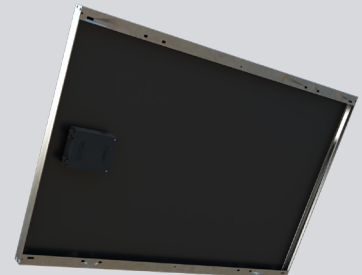
POWER	85W
NOMINAL VOLTAGE	12V
OPEN CIRCUIT VOLTAGE	22.2V
SHORT CIRCUIT CURRENT	5.35A
MAXIMUM POWER VOLTAGE	17.8V
MAXIMUM POWER CURRENT	4.78A
GLASS	Tempered
FRAME	Anodized aluminum
CONSTRUCTION	Silicon cells encapsulated in double-layer EVA with a white polymer backing
WEIGHT	20lbs
ENCLOSURE	IP67 rated
MOUNTING HARDWARE	Various options available
OPERATING TEMPERATURE RANGE	-40°F to 194°F (-40°C to 90°C)
DIMENSIONS	21"W x 47.5"H x 2"D



FRONT SINGLE PANEL



FRONT DUAL PANEL



BACK SINGLE PANEL

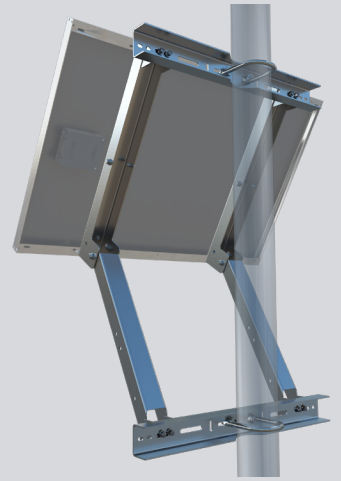


BACK DUAL PANEL

(800) 236-0112  TAPCO.net.com

SIDE-OF-POLE BRACKET

MATERIAL	Aluminum
POLE TYPE	3" or larger (4½" shown)
BRACKET	Single and Dual solar panel configurations available
MOUNTING HARDWARE	Banding, U-bolt, or bolt



SIDE-OF-POLE SINGLE PANEL BRACKET



SIDE-OF-POLE DUAL PANEL BRACKET