

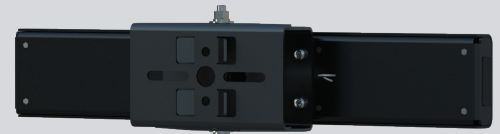
# WRONG-WAY RECTANGULAR FLASHING BEACON (RFB)

## SPECIFICATIONS

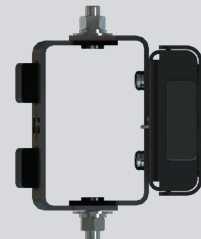
<b>POWER</b>	Low voltage, current controlled from TAPCO controller
<b>DIMMING</b>	Variable based on photocell sensor input or 6V solar panel
<b>LIGHT BAR HOUSING</b>	Black powder-coated aluminum
<b>VEHICLE LED MODULES</b>	7 in. W x 3 in. H; 2 arrays of 8 red LEDs spaced 7 in. apart; SAE J595 Class 1 Certified
<b>LED COLOR</b>	Red
<b>FLASH PATTERNS</b>	Wig-Wag
<b>VISIBILITY</b>	Daytime: more than 1,000 feet; Nighttime: more than 1 mile
<b>UNIVERSAL MOUNTING BRACKET</b>	Articulates up to 30° Mounts to most common size metal or wood posts
<b>MOUNTING HARDWARE</b>	Banding to round pole; U-bolt to round pole; Bolt to square pole
<b>LIFE EXPECTANCY</b>	100,000 hours
<b>OPERATING TEMPERATURE RANGE</b>	-40° F to 176° F (-40° C to 80° C)
<b>LIGHT BAR DIMENSIONS</b>	22" W x 4" H x 1.5" D



FRONT



BACK



SIDE



TOP