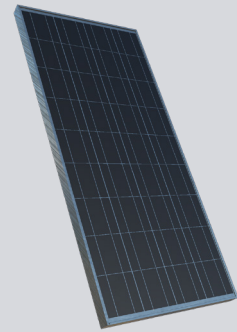


130W SOLAR PANEL

SPECIFICATIONS

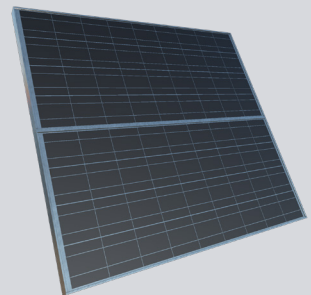
POWER	130W
NOMINAL VOLTAGE	12V
OPEN CIRCUIT VOLTAGE	22.0V
SHORT CIRCUIT CURRENT	7.89A
MAXIMUM POWER VOLTAGE	18.1V
MAXIMUM POWER CURRENT	7.38A
GLASS	Tempered
FRAME	Anodized aluminum
CONSTRUCTION	Silicon cells encapsulated in double-layer EVA with a white polymer backing
WEIGHT	27lbs
ENCLOSURE	IP67 rated
MOUNTING HARDWARE	Various options available
OPERATING TEMPERATURE RANGE	-40°F to 194°F (-40°C to 90°C)
DIMENSIONS	26"W x 58"H x 2"D



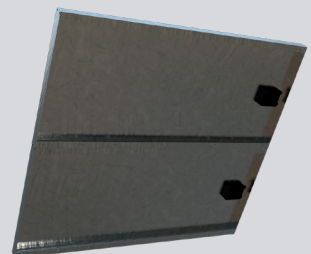
FRONT SINGLE PANEL



FRONT DUAL PANEL



BACK SINGLE PANEL



BACK DUAL PANEL

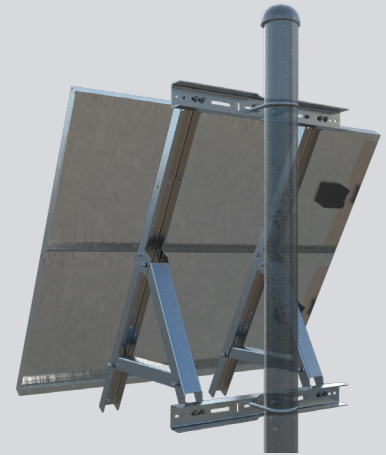
(800) 236-0112  TAPCO.net.com

SIDE-OF-POLE BRACKET

MATERIAL	Aluminum
POLE TYPE	3" or larger (4½" shown)
BRACKET	Single and Dual solar panel configurations available
MOUNTING HARDWARE	Banding, U-bolt, or bolt



SIDE-OF-POLE SINGLE PANEL BRACKET



SIDE-OF-POLE DUAL PANEL BRACKET