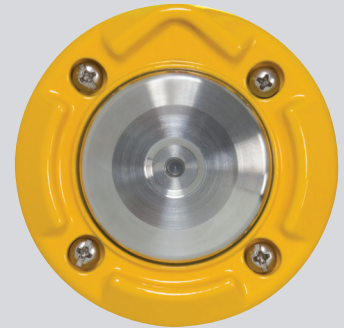


# BULLDOG PUSH BUTTON WITHOUT LED

## SPECIFICATIONS

<b>POWER</b>	12VDC to 36VDC (from control circuit)
<b>PUSH BUTTON</b>	Vandal resistant, ADA compliant
<b>ACTIVATION CONFIRMATION</b>	Beep conformation activated when push button is pressed
<b>PUSH BUTTON HOUSING</b>	Yellow aluminum is standard; black available
<b>INSTRUCTIONAL SIGN</b>	9 in. W x 12 in. H; retroreflective sheeting with tamper-resistant mounting screws.
<b>OPERATING FORCE</b>	3 lbs maximum
<b>PEAK CURRENT DRAW</b>	~350mA
<b>BUTTON ENCLOSURE</b>	Aluminum, powder coated
<b>BUTTON MATERIAL</b>	316 stainless steel
<b>IMPEDANCE</b>	5 ohms typical
<b>INSTALLATION</b>	2 holes on 2 in. centers, tapped 1/4-20 plus 0.5 in. or larger hole for wire access
<b>PUSH BUTTON OUTPUT</b>	Solid-state active-low
<b>OPERATING TEMPERATURE RANGE</b>	-30° F to 165° F (-34° C to 74° C)
<b>DIMENSIONS</b>	3.4" W x 0.9" H x 0.9" D



**BULLDOG PUSH BUTTON**



**R10-25 SIGN**