

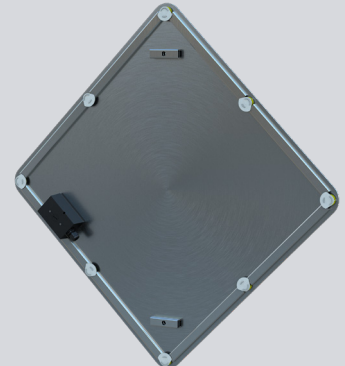
# CUSTOMER-INTEGRATED BLINKERSIGN®

## SPECIFICATIONS

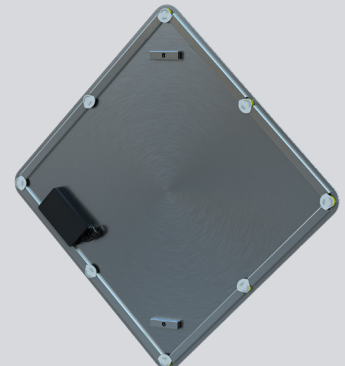
<b>POWER</b>	Flashing 12VDC or 120VAC
<b>SIGN LEGEND</b>	Various MUTCD options available (W11-2 shown)
<b>SIGN SUBSTRATE</b>	.080" highway grade aluminum
<b>REFLECTIVE SHEETING</b>	3M™ DG3 with anti-graffiti overlay
<b>DIMMING</b>	Fixed brightness
<b>FLASH PATTERN</b>	Dependent upon customer-provided controller
<b>LED TYPE</b>	Environmentally-sealed, high-power 1 watt LED
<b>LED COLOR</b>	Amber, red, white or orange (dependent upon sign legend)
<b>LED QUANTITY</b>	Various options dependent upon sign legend
<b>LED LIFE EXPECTANCY</b>	100,000 hours
<b>VISIBILITY</b>	Daytime: more than 1,000 feet; Nighttime: more than 1 mile
<b>ENCLOSED ALUMINUM CHANNELS</b>	Protect wiring against inclement weather, tampering and vandalism
<b>MOUNTING BRACKETS</b>	Single post standard, double post or z-bar available
<b>MOUNTING HARDWARE</b>	Various options available
<b>OPERATING TEMPERATURE RANGE</b>	-40°F to 122°F (-40°C to 50°C)
<b>DIMENSIONS</b>	Various options dependent upon sign legend



**FRONT**



**12VDC BACK**



**120VAC BACK**